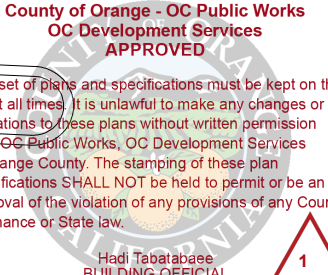
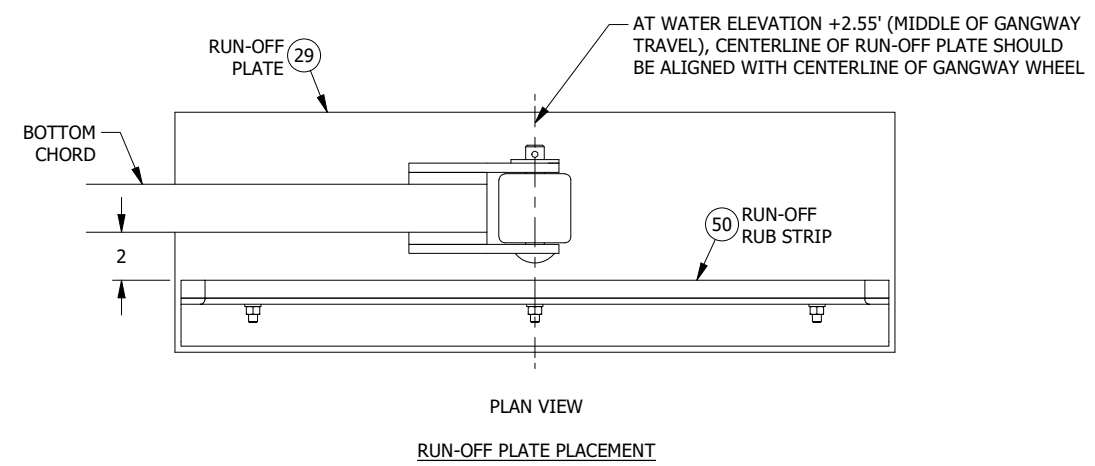
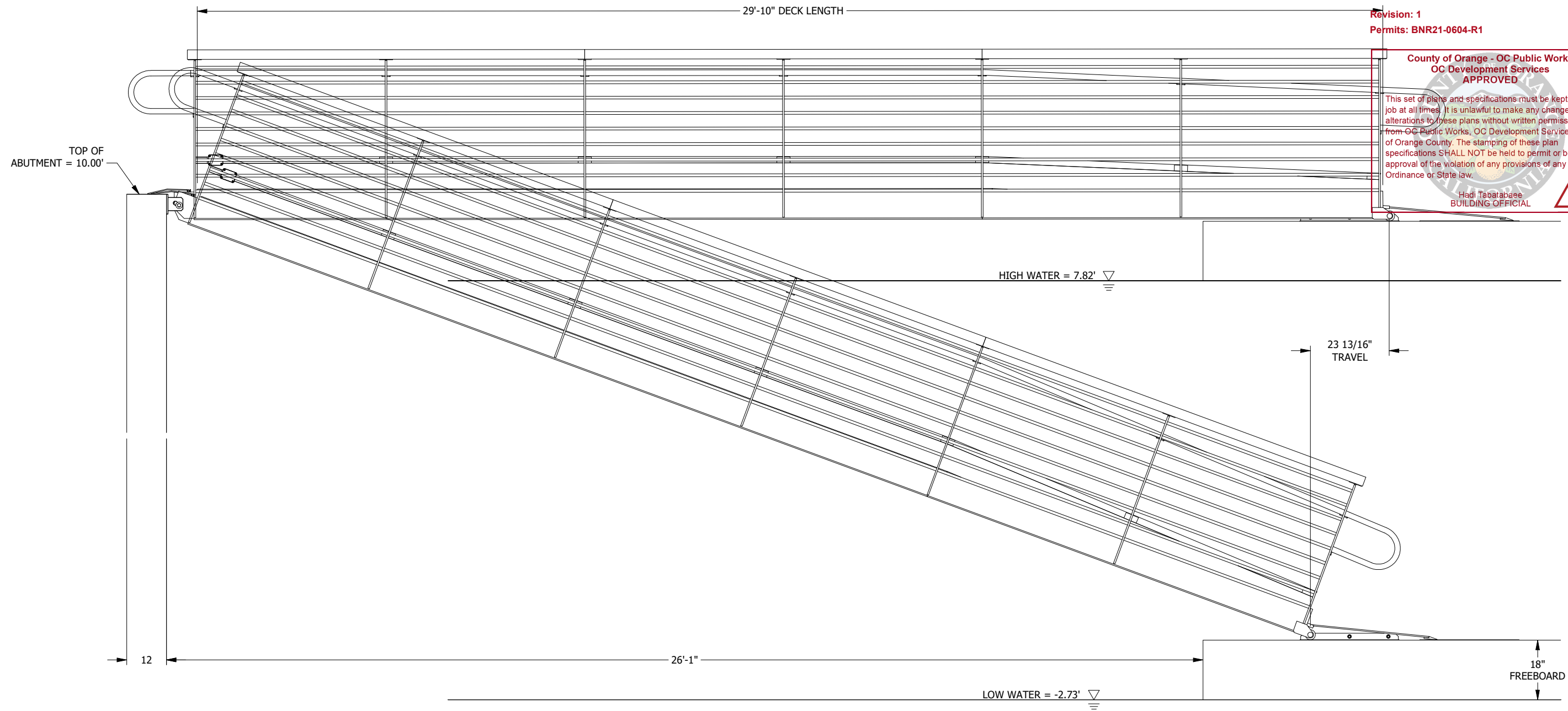


Revision: 1
Permits: BNR21-0604-R1

County of Orange - OC Public Works
OC Development Services
APPROVED


This set of plans and specifications must be kept on the job at all times. It is unlawful to make any changes or alterations to these plans without written permission from OC Public Works, OC Development Services of Orange County. The stamping of these plan specifications SHALL NOT be held to permit or be an approval of the violation of any provisions of any County Ordinance or State law.

Hadi Tabatabaee
BUILDING OFFICIAL

11/2/2022

NOTES
1. CUSTOMER IS RESPONSIBLE FOR PLACING WHEEL RUN-OFF PLATES AT CORRECT LOCATIONS.



PO BOX 2930 WOODLAND, WA 98674 (360) 841-8320 (800) 332-DOCK FAX (360) 841-8021 3625

PROPRIETARY DESIGNS AND DATA THAT ARE THE SOLE PROPERTY OF TOPPER INDUSTRIES, INC. ARE INCLUDED IN THIS DRAWING. DATA AND INFORMATION CONTAINED HEREIN SHALL, OUTSIDE OF THE RECIPIENT COMPANY, NOT BE USED FOR ANY PURPOSE EXCEPT AS SPECIFICALLY AUTHORIZED BY TOPPER INDUSTRIES, INC.

7	11/2/2022	JC		MODIFIED PER ENGINEER
6	10/31/2022	JC		MODIFIED TO BOTTOM FB
5	9/27/2022	JC		REVISED SHORE MOUNT
4	8/23/2022	JC		ADDED LIGHTRAIL
NO.	DATE	BY	CHK	REVISION DESCRIPTION
4'x30' GANGWAY SITE ELEVATIONS DANA POINT HARBOR REVITALIZATION BELLINGHAM MARINE INDUSTRIES, INC. DANA POINT, CALIFORNIA				
SIZE B	DWG NO. 8115-A100	JOB NO. 8115		

MAJOR COMPONENT LIST				
ITEM	COMPONENT	DESCRIPTION	MATERIAL	SIZE
2	STRINGER	RECT TUBE	ALUMINUM	8x2x.250
4	BRIDGE	RECT TUBE	ALUMINUM	8x2x.250
8	MIDRAIL	PIPE	ALUMINUM	1/2" SCH 40
13	ANODIZED HANDRAIL	PIPE	ALUMINUM	1 1/4" SCH 40
34	PLATE POST	PLATE POST	ALUMINUM	1/2x9
40	DECK, SANDBLASTED	DECK, TOPPER	ALUMINUM	3/4x6
53	TOP RAIL	TOP RAIL	IPE	3 1/2" DIA
70	LIGHTRAIL	LIGHTRAIL	ALUMINUM	TOPPER
82	UTILITY CHANNEL	UTILITY CHANNEL, TOPPER	ALUMINUM	1 5/8x1 5/8
83	BOTTOM STIFFENER PLATE	FLAT BAR	ALUMINUM	3/8x5FB
85	TOP STRINGER GUSSET	FLAT BAR	ALUMINUM	1/4x2FB

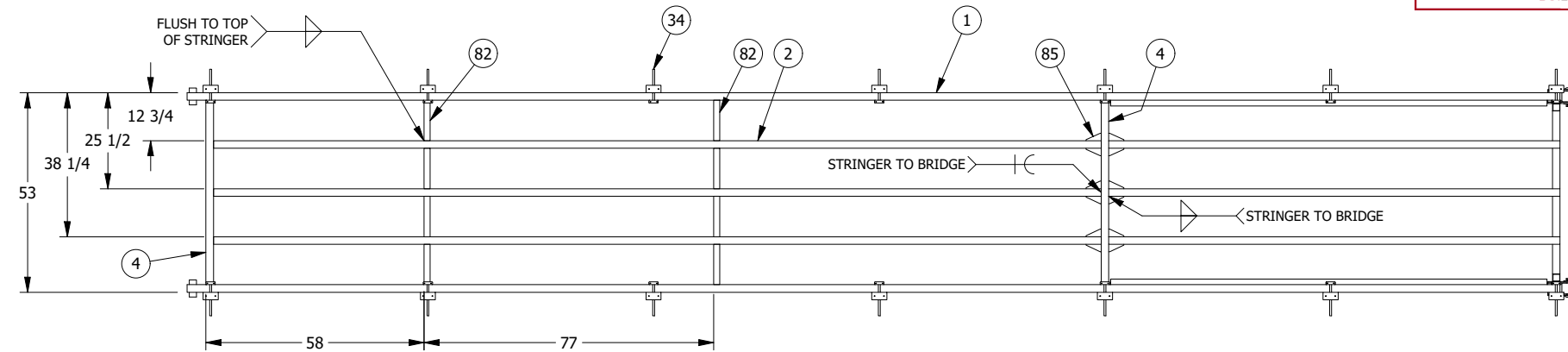
Building&Safety: Roshanak Amirazizi 12/20/2022

Revision: 1
Permits: BNR21-0604-R1

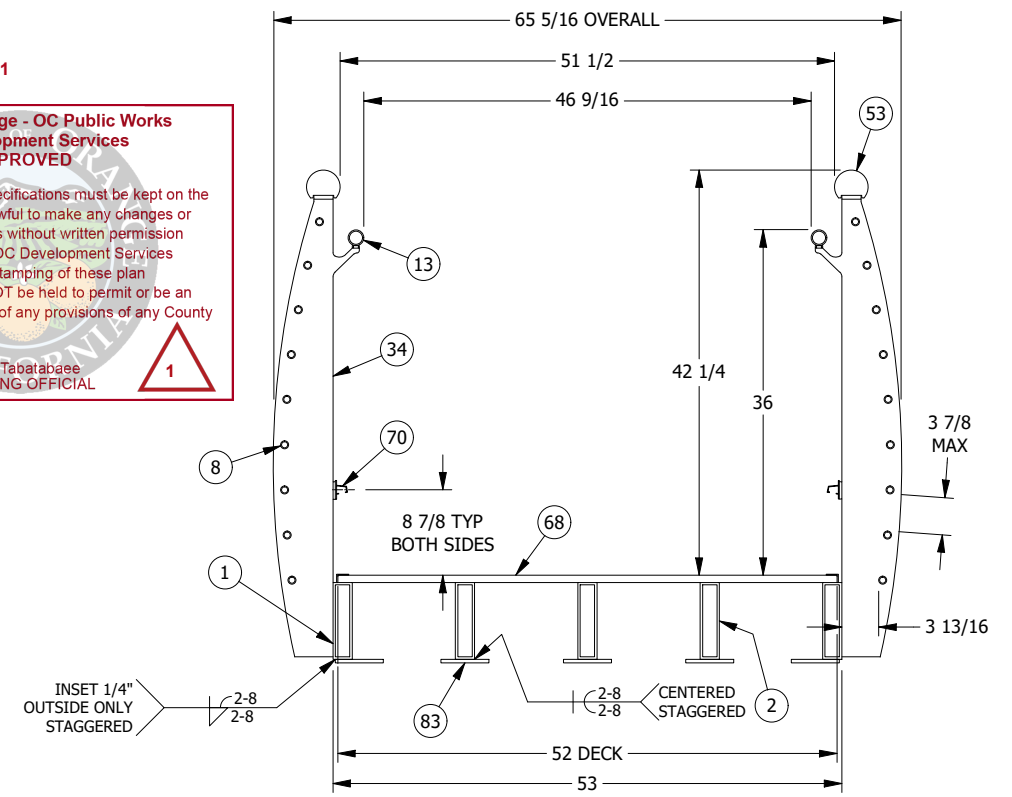
**County of Orange - OC Public Works
OC Development Services
APPROVED**

This set of plans and specifications must be kept on the job at all times. It is unlawful to make any changes or alterations to these plans without written permission from OC Public Works, OC Development Services of Orange County. The stamping of these plan specifications SHALL NOT be held to permit or be an approval of the violation of any provisions of any County Ordinance or State law.

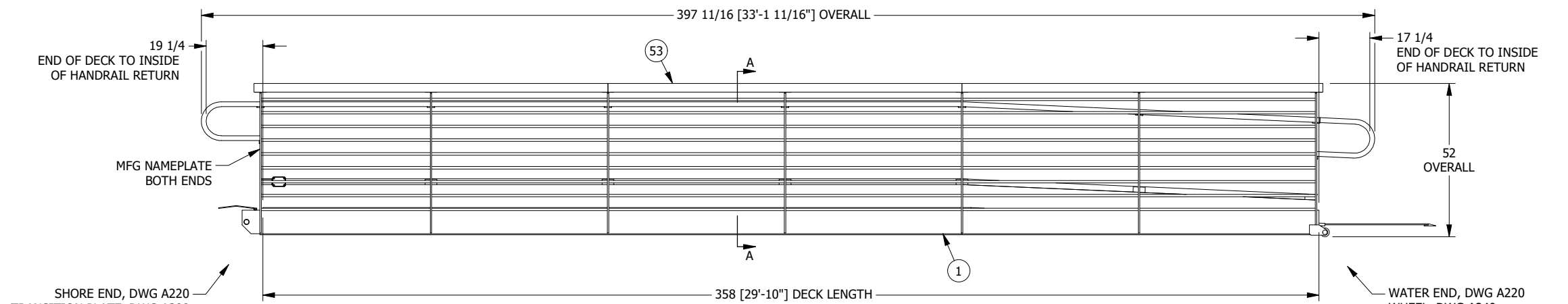
Hadi Tabatabaee
BUILDING OFFICIAL



PLAN VIEW
(DECK, HANDRAIL, MIDRAIL AND TOP RAIL NOT SHOWN)



SECTION A-A



SIDE ELEVATION VIEW
(SHORE MOUNTS AND WHEEL RUN-OFF PLATES NOT SHOWN)

GENERAL STRUCTURAL NOTES
CONFORMS TO 2015 AND 2020 ADM AND 2019 CA BUILDING CODE STANDARDS (TITLE 24) EFFECTIVE 1-1-19.

THE CONTRACTOR SHALL BE RESPONSIBLE FOR STRUCTURAL STABILITY DURING CONSTRUCTION. THE STRUCTURE SHOWN ON THE DRAWINGS HAS BEEN DESIGNED FOR STABILITY IN THE FINAL CONFIGURATION ONLY.

UTILITY LOAD: 15 PLF
DEFLECTION: L/260

STRUCTURAL MATERIAL (UNLESS OTHERWISE SPECIFIED):
ALUMINUM SHAPES AND PIPE: 6061-T6, MILL FINISH.
ALUMINUM TRANSITION PLATES: 5052-H32.
ALUMINUM ANODIZED HANDRAIL AND RETURNS: 6063-T563.
STEEL PLATE, CHANNEL AND ANGLE: ASTM A36.
STEEL HSS: ASTM A500 GRADE B (F_y = 46 KSI).
STEEL PIPE: ASTM A53 GRADE B.
GALVANIZING: ASTM A123.
SANDBLASTING: SSPC SP 6-63.

STRUCTURAL WELDING FABRICATION SHALL BE IN ACCORDANCE WITH THE AA SPECIFICATIONS FOR ALUMINUM STRUCTURES. WELD USING ALUMINUM FILLER METAL ER5356. FABRICATION, WELDING, WELDING PROCEDURES AND INSPECTION SHALL CONFORM TO AWS D1.2:2014 AND AWS D1.1:2010, AS APPLICABLE, UNLESS OTHERWISE NOTED.

UHMW INDICATES ULTRA HIGH MOLECULAR WEIGHT POLYETHYLENE.

FABRICATION NOTES

- BREAK ALL SHARP EDGES.
- PROVIDE 1/4" DRAIN HOLES IN BOTTOM OF ALL CHORDS, STRINGERS AND HANDRAILS AT BOTH ENDS.

**FIRST GANGWAY TO BE
LOAD TESTED AT 75 PSF
PRIOR TO SHIPPING**



11/2/2022

**GANGWAY APPROX
SHIPPING WT = 2317 LBS**
(NOT INCLUDING SHORE MOUNTS)
(2) SHORE MOUNTS APPROX WT = 44 LBS

TOPPER

PO BOX 2930 WOODLAND, WA 98674 (360) 841-8320 (800) 332-DOCK (360) 841-8021 3625

PROPRIETARY DESIGNS AND DATA THAT ARE THE SOLE PROPERTY OF TOPPER INDUSTRIES, INC. ARE INCLUDED IN THIS DRAWING. DATA AND INFORMATION CONTAINED HEREIN SHALL, OUTSIDE OF THE RECIPIENT COMPANY, NOT BE USED FOR ANY PURPOSE EXCEPT AS SPECIFICALLY AUTHORIZED BY TOPPER INDUSTRIES, INC.

- NOTES**
- UNLESS OTHERWISE SPECIFIED:
 - DIMENSIONS ARE IN INCHES.
 - WELD SIZE IS EQUAL TO THICKNESS OF THINNER PART WELDED, MAX 5/16".
 - REFERENCE DWG A201 FOR PARTS LIST.

NO.	DATE	BY	CHK	REVISION DESCRIPTION
7	11/2/2022	JC		MODIFIED PER ENGINEER
6	10/31/2022	JC		MODIFIED TO BOTTOM FB
5	9/27/2022	JC		REVISED SHORE MOUNT
4	8/23/2022	JC		ADDED LIGHTRAIL

4'x30' GANGWAY
PLAN, ELEVATION AND SECTION VIEWS
DANA POINT HARBOR REVITALIZATION
BELLINGHAM MARINE INDUSTRIES, INC.
DANA POINT, CALIFORNIA

SIZE	DWG NO.	JOB NO.
B	8115-A200	8115

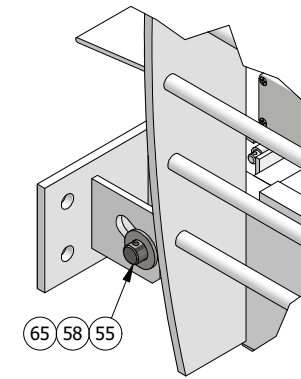
Revision: 1
Permits: BNR21-0604-R1

**County of Orange - OC Public Works
OC Development Services
APPROVED**

This set of plans and specifications must be kept on the job at all times. It is unlawful to make any changes or alterations to these plans without written permission from OC Public Works, OC Development Services of Orange County. The stamping of these plan specifications SHALL NOT be held to permit or be an approval of the violation of any provisions of any County Ordinance or State Law.

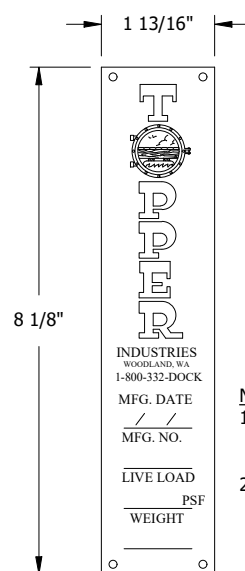
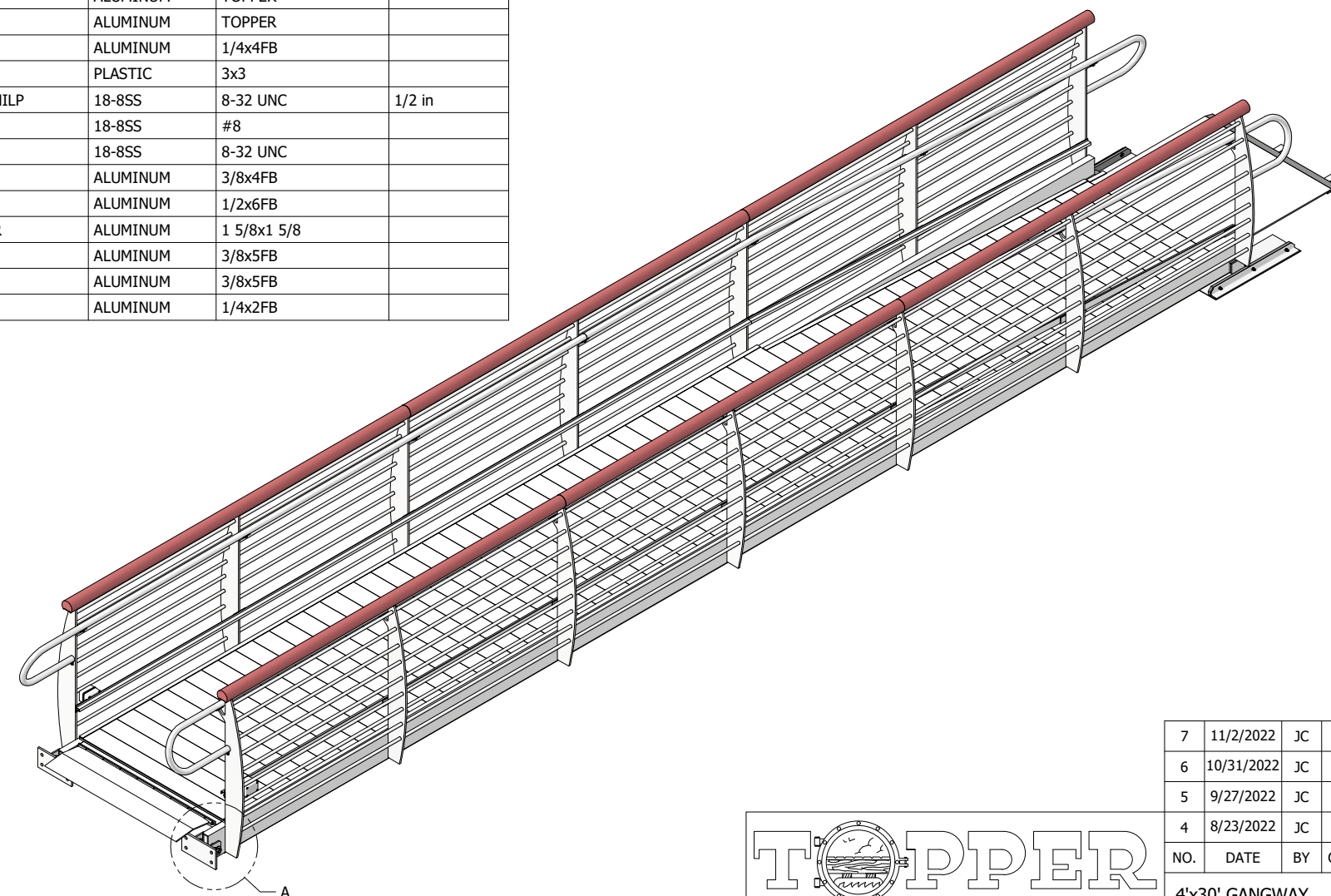
Hadi Tabatabaee
BUILDING OFFICIAL

1



DETAIL A

PARTS LIST					PARTS LIST				
ITEM	DESCRIPTION	MATERIAL	SIZE	BOLT LENGTH	ITEM	DESCRIPTION	MATERIAL	SIZE	BOLT LENGTH
1	RECT TUBE	ALUMINUM	8x2x.250		48	BUSHING, ISO, 00009	UHMW, WHT	1 1/2"ODx1 1/16"ID	
2	RECT TUBE	ALUMINUM	8x2x.250		49	TRANS NOSE, 3/8" TRANS PLT, 00095	UHMW, BLK	3/4x4	
3	RECT TUBE	ALUMINUM	8x2x.250		50	RUN-OFF RUB STRIP	UHMW, BLK	3/4x2	
4	RECT TUBE	ALUMINUM	8x2x.250		51	WHEEL, 00015	UHMW, BLK	3"ODx13/16"ID	
5	SQUARE TUBE	ALUMINUM	2x2x.125		52	TOP RAIL	IPE	3 1/2" DIA	
6	SQUARE TUBE	ALUMINUM	2x2x.125		53	TOP RAIL	IPE	3 1/2" DIA	
7	SQUARE TUBE	ALUMINUM	2x2x.125		55	HINGE PIN, 00031	STEEL 4142	1" DIA	
8	PIPE	ALUMINUM	1/2" SCH 40		56	BOLT AXLE, 00074	STEEL, HDG	3/4" DIA	4 1/2 in
9	TRANS BARREL	ALUMINUM	1/2" SCH 40		57	WASHER, FLAT	STEEL, HDG	3/4"	
10	TRANS BARREL	ALUMINUM	1/2" SCH 40		58	WASHER, F436	STEEL, HDG	1"	
11	TRANS BARREL	ALUMINUM	1/2" SCH 40		59	SCREW, FLAT HD, HEX DRIVE	316SS	#10	1 1/2 in
12	PIPE	ALUMINUM	1 1/4" SCH 40		60	BOLT, HEX	316SS	3/8-16 UNC	1 1/4 in
13	PIPE	ALUMINUM	1 1/4" SCH 40		61	NUT, HEX	316SS	3/8-16 UNC	
14	PIPE, R6" CL 180 RETURN	ALUMINUM	1 1/4" SCH 40		62	WASHER, FLAT	316SS	3/8"	
15	PIPE, R6" CL 180 RETURN	ALUMINUM	1 1/4" SCH 40		63	WASHER, LOCK	316SS	3/8"	
16	PIPE, BOSS	ALUMINUM	1 1/2" SCH 40		64	COTTER PIN	316SS	3/16"	
18	ANGLE	ALUMINUM	L1 1/2x1 1/2x1/8		65	COTTER PIN	316SS	1/4"	
19	RUN-OFF ANGLE	ALUMINUM	L2x2x1/4		68	DECK, TOPPER	ALUMINUM	3/4x6	
20	HANDRAIL RETURN TAB, 00013	ALUMINUM	1/4x1FB		69	DECK TRIM	ALUMINUM	TOPPER	
21	TRANS PLATE RUN-OFF STRIP	ALUMINUM	1/8x2FB		70	LIGHTRAIL	ALUMINUM	TOPPER	
22	FLAT BAR	ALUMINUM	1/4x1 1/2FB		71	LIGHTRAIL	ALUMINUM	TOPPER	
23	FLAT BAR	ALUMINUM	1/4x1 1/2FB		72	LIGHTRAIL	ALUMINUM	TOPPER	
24	FLAT BAR	ALUMINUM	1/4x1 1/2FB		73	LIGHTRAIL	ALUMINUM	TOPPER	
25	TRANS MOUNT	ALUMINUM	1/4x2FB		74	FLAT BAR	ALUMINUM	1/4x4FB	
26	TRANS MOUNT	ALUMINUM	1/4x3FB		75	JUNCTION BOX	PLASTIC	3x3	
27	FLAT BAR	ALUMINUM	3/8x2FB		76	SCREW, MACH, PAN HD, PHILP	18-8SS	8-32 UNC	1/2 in
28	FLAT BAR	ALUMINUM	1/2x3FB		77	WASHER, FLAT	18-8SS	#8	
29	WHEEL RUN-OFF PLATE	ALUMINUM	1/8x10		78	NUT, NYLOC	18-8SS	8-32 UNC	
32	PLATE, HANDRAIL TAB	ALUMINUM	1/4x3/4		80	FLAT BAR	ALUMINUM	3/8x4FB	
33	WHEEL PLATE, LD, 00073	ALUMINUM	3/8x3 1/2FB		81	FLAT BAR	ALUMINUM	1/2x6FB	
34	PLATE POST	ALUMINUM	1/2x9		82	UTILITY CHANNEL, TOPPER	ALUMINUM	1 5/8x1 5/8	
35	PLATE POST	ALUMINUM	1/2x9		83	FLAT BAR	ALUMINUM	3/8x5FB	
36	PLATE POST	ALUMINUM	1/2x9		84	FLAT BAR	ALUMINUM	3/8x5FB	
37	PLATE POST	ALUMINUM	1/2x9		85	FLAT BAR	ALUMINUM	1/4x2FB	
38	TRANS PLATE	ALUM 5052-H32	3/8x36						
39	TRANS PLATE, 3/4" BREAK	ALUM 5052-H32	1/4x12						
40	DECK, TOPPER	ALUMINUM	3/4x6						
41	DECK, TOPPER	ALUMINUM	3/4x6						
44	DECK TRIM	ALUMINUM	TOPPER						
45	DECK TRIM	ALUMINUM	TOPPER						
46	TRANS AXLE	ALUMINUM	1/2" DIA						
47	TRANS AXLE	ALUMINUM	1/2" DIA						



NAMEPLATE SPECIFICATIONS:
1. MATERIAL IS ANODIZED ALUMINUM, .020" THICK, ADHESIVE BACKED & RIVETED, BACKGROUND COLOR BLUE.
2. GANGWAY DATA STAMPED.

TOPPER

PO BOX 2930 WOODLAND, WA 98674 (360) 841-8320 (800) 332-DOCK FAX (360) 841-8021 3625

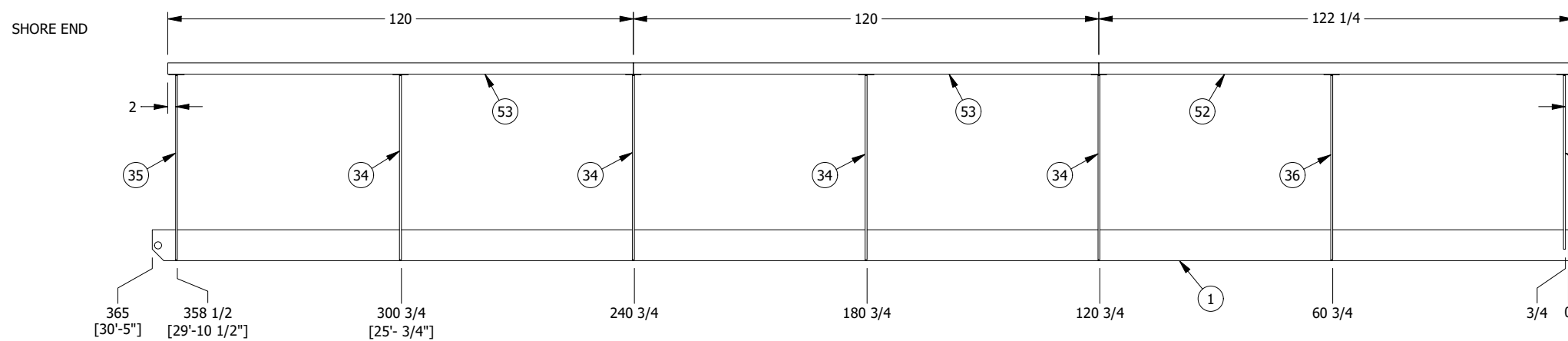
PROPRIETARY DESIGNS AND DATA THAT ARE THE SOLE PROPERTY OF TOPPER INDUSTRIES, INC. ARE INCLUDED IN THIS DRAWING. DATA AND INFORMATION CONTAINED HEREIN SHALL, OUTSIDE OF THE RECIPIENT COMPANY, NOT BE USED FOR ANY PURPOSE EXCEPT AS SPECIFICALLY AUTHORIZED BY TOPPER INDUSTRIES, INC.

NO.	DATE	BY	CHK	REVISION DESCRIPTION
7	11/2/2022	JC		MODIFIED PER ENGINEER
6	10/31/2022	JC		MODIFIED TO BOTTOM FB
5	9/27/2022	JC		REVISED SHORE MOUNT
4	8/23/2022	JC		ADDED LIGHTRAIL

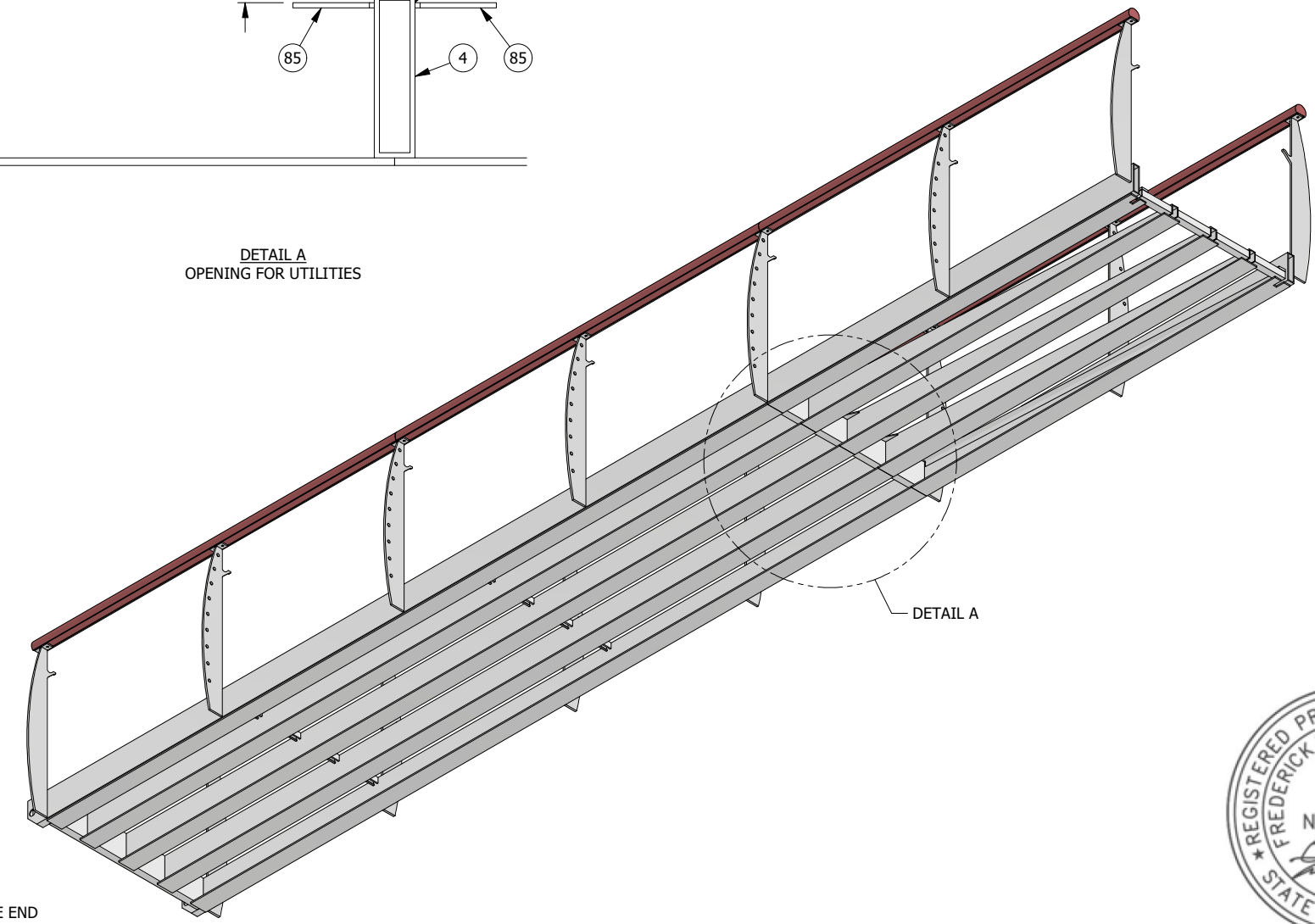
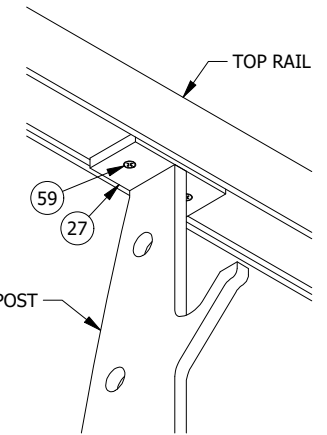
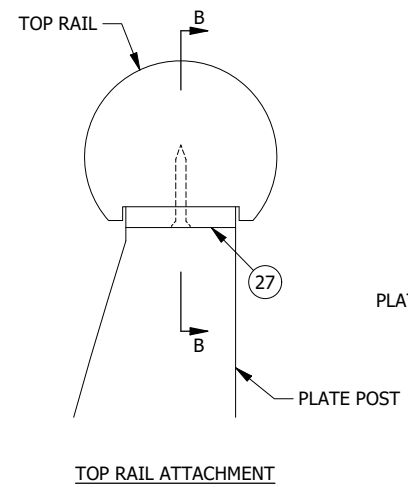
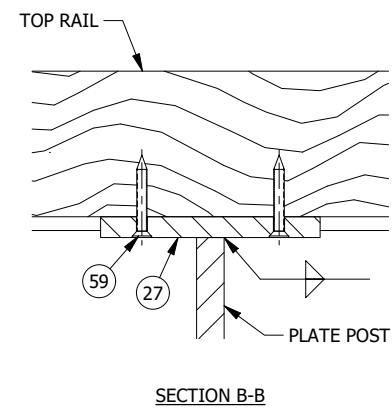
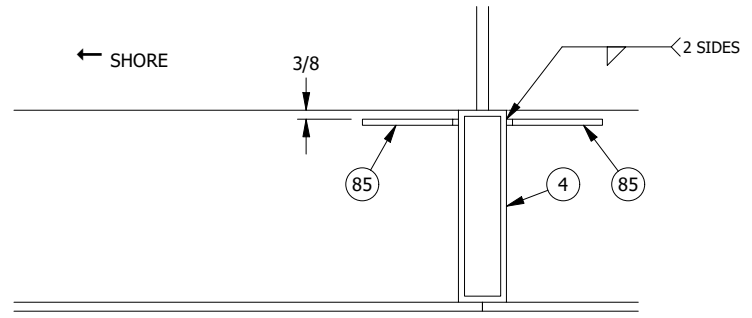
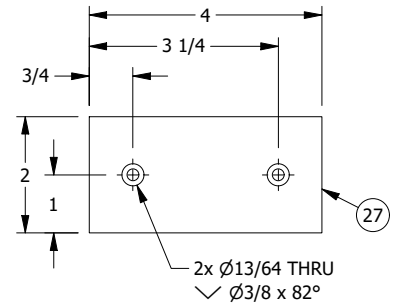
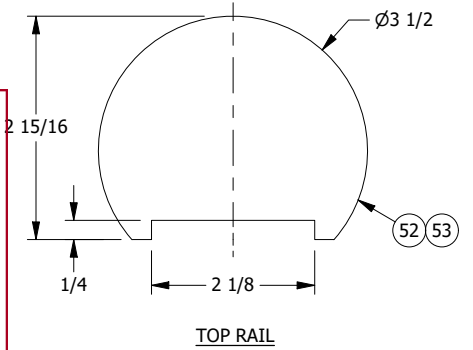
4'x30' GANGWAY PARTS LIST
DANA POINT HARBOR REVITALIZATION
BELLINGHAM MARINE INDUSTRIES, INC.
DANA POINT, CALIFORNIA

SIZE	DWG NO.	JOB NO.
B	8115-A201	8115

11/2/2022



Revision: 1
 Permits: **WATER 10001 R1**
**County of Orange - OC Public Works
 OC Development Services
 APPROVED**
 This set of plans and specifications must be kept on the job at all times. It is unlawful to make any changes or alterations to these plans without written permission from OC Public Works, OC Development Services of Orange County. The stamping of these plan specifications SHALL NOT be held to permit or be an approval of the violation of any provisions of any County Ordinance or State law.
 Hadi Tabatabaee
 BUILDING OFFICIAL



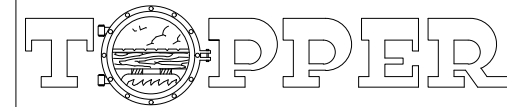
- NOTES
 1. UNLESS OTHERWISE SPECIFIED:
 - DIMENSIONS ARE IN INCHES.
 - WELD SIZE IS EQUAL TO THICKNESS OF THINNER PART WELDED, MAX 5/16".
 2. REFERENCE DWG A201 FOR PARTS LIST.

7	11/2/2022	JC		MODIFIED PER ENGINEER
6	10/31/2022	JC		MODIFIED TO BOTTOM FB
5	9/27/2022	JC		REVISED SHORE MOUNT
4	8/23/2022	JC		ADDED LIGHTRAIL
NO.	DATE	BY	CHK	REVISION DESCRIPTION

4'x30' GANGWAY
 PLATE POSTS, TOP RAIL AND BOTTOM PLATES
 DANA POINT HARBOR REVITALIZATION
 BELLINGHAM MARINE INDUSTRIES, INC.
 DANA POINT, CALIFORNIA



11/2/2022



PO BOX 2930 WOODLAND, WA 98674 (360) 841-8320 (800) 332-DOCK FAX (360) 841-8021 3625

PROPRIETARY DESIGNS AND DATA THAT ARE THE SOLE PROPERTY OF TOPPER INDUSTRIES, INC. ARE INCLUDED IN THIS DRAWING. DATA AND INFORMATION CONTAINED HEREIN SHALL, OUTSIDE OF THE RECIPIENT COMPANY, NOT BE USED FOR ANY PURPOSE EXCEPT AS SPECIFICALLY AUTHORIZED BY TOPPER INDUSTRIES, INC.

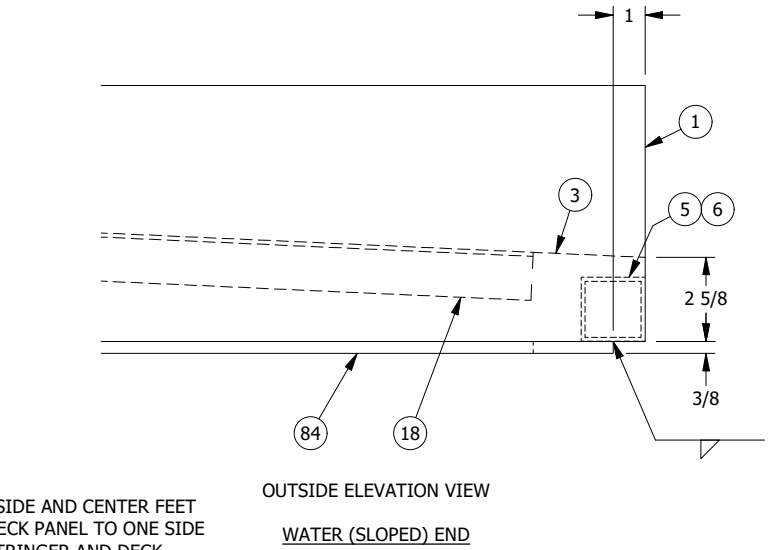
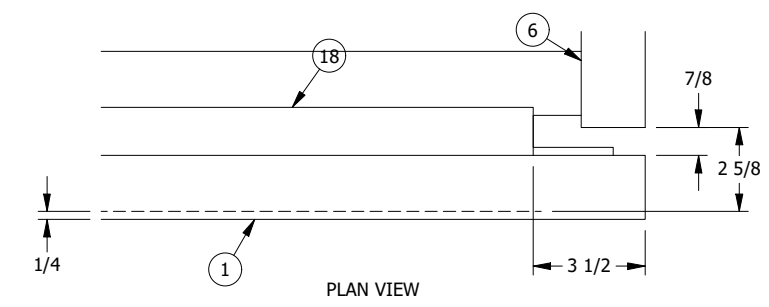
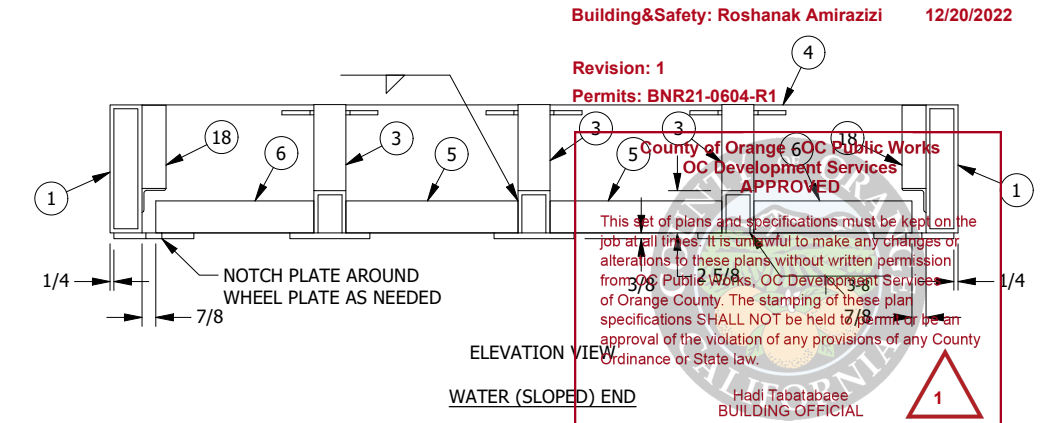
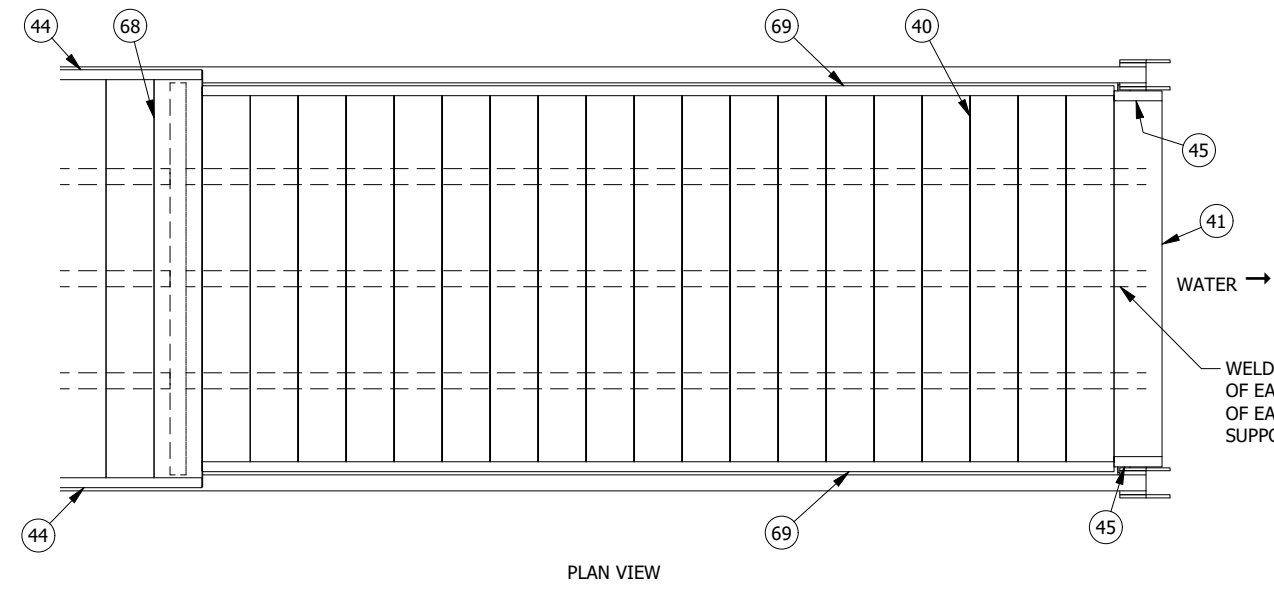
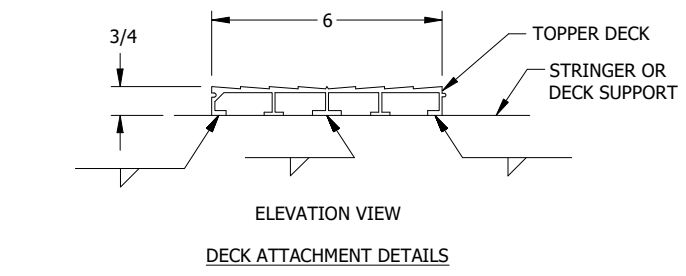
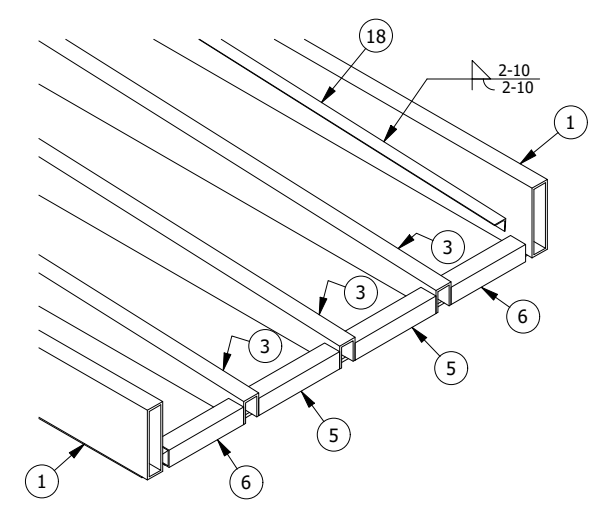
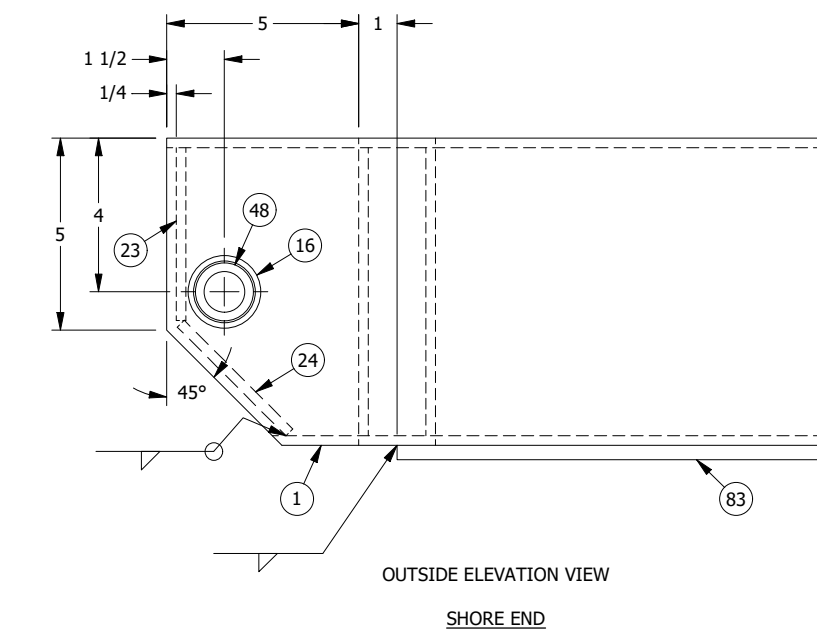
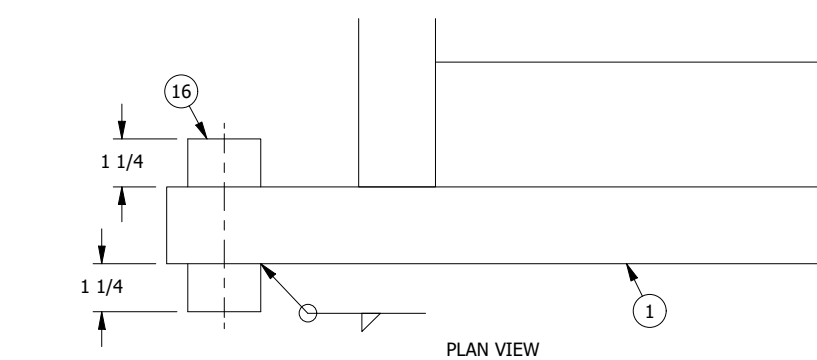
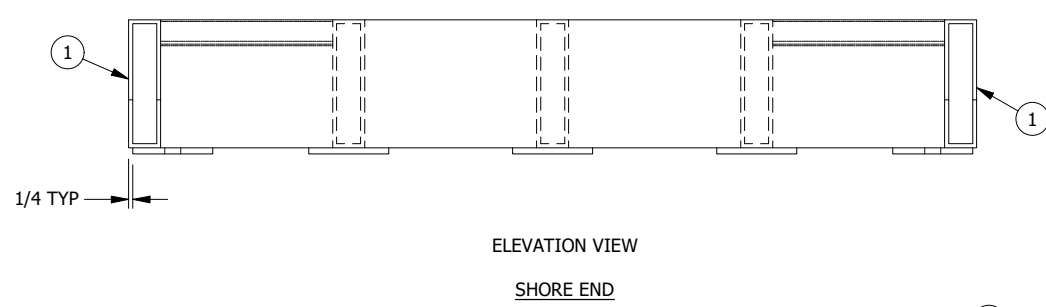
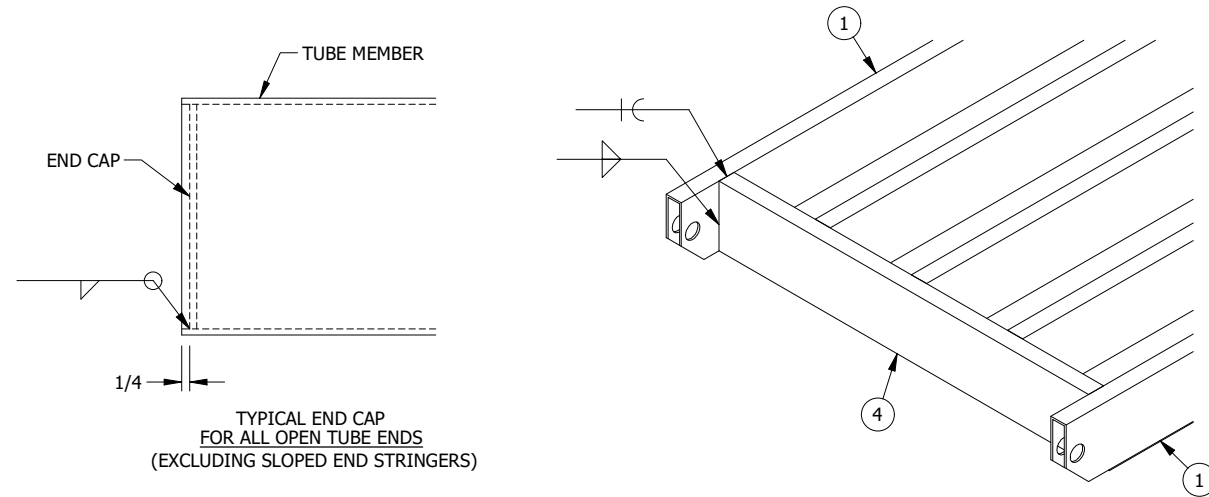
SIZE	DWG NO.	JOB NO.
B	8115-A210	8115

Revision: 1
Permits: BNR21-0604-R1

County of Orange Public Works
OC Development Services
APPROVED

This set of plans and specifications must be kept on the job at all times. It is unlawful to make any changes or alterations to these plans without written permission from the Public Works, OC Development Services of Orange County. The stamping of these plan specifications SHALL NOT be held to be an approval of the violation of any provisions of any County Ordinance or State law.

Hadi Tabatabaee
BUILDING OFFICIAL



- NOTES
- UNLESS OTHERWISE SPECIFIED:
 - DIMENSIONS ARE IN INCHES.
 - WELD SIZE IS EQUAL TO THICKNESS OF THINNER PART WELDED, MAX 5/16".
 - REFERENCE DWG A201 FOR PARTS LIST.



11/2/2022

TOPPER

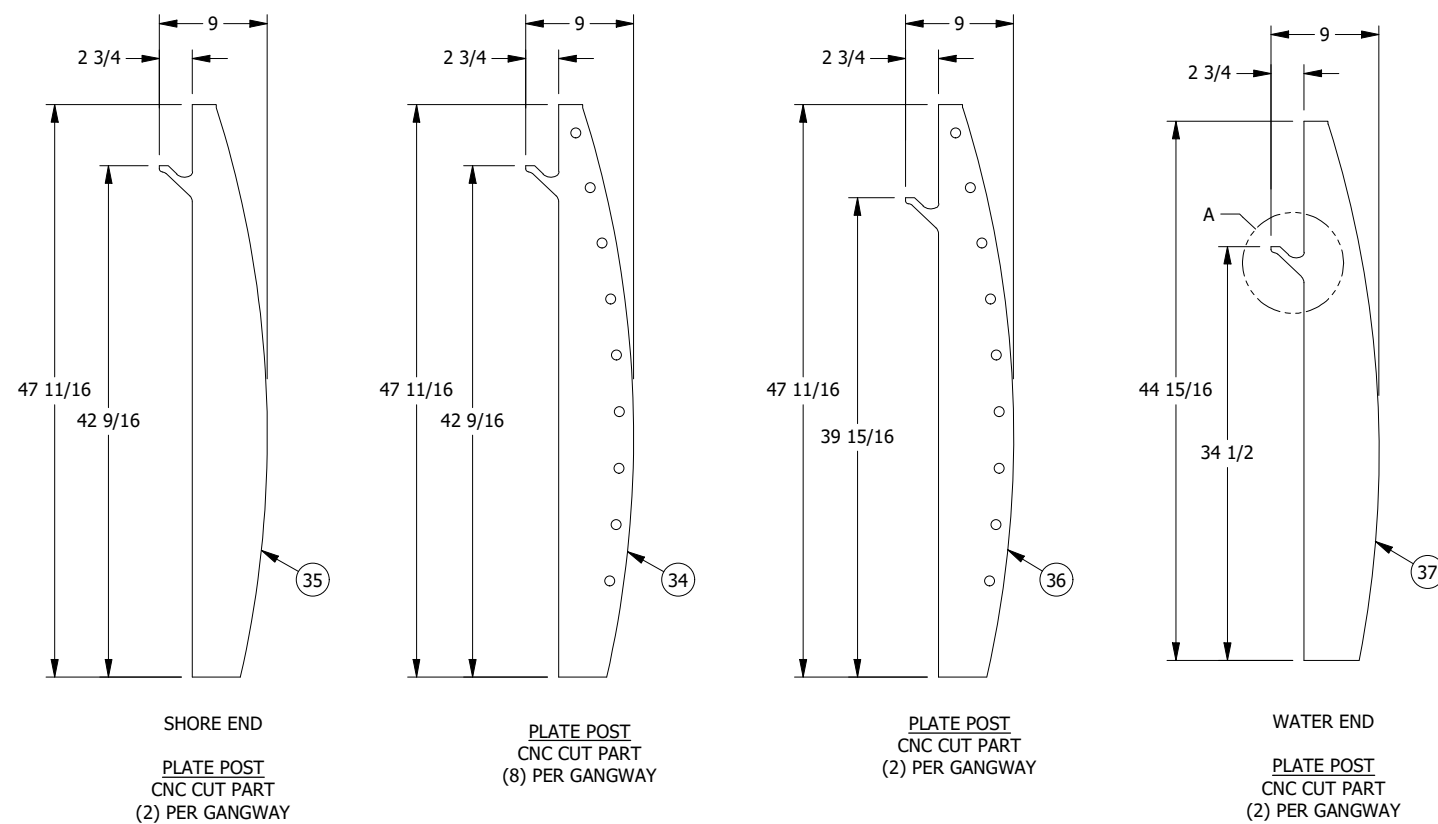
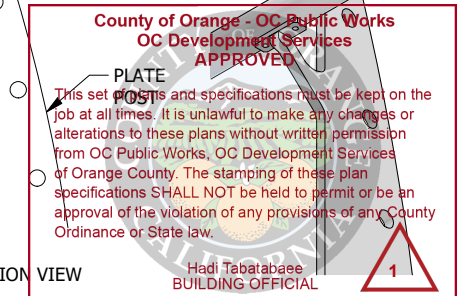
PO BOX 2930 WOODLAND, WA 98674 (360) 841-8320 (800) 332-DOCK FAX (360) 841-8021 3625

PROPRIETARY DESIGNS AND DATA THAT ARE THE SOLE PROPERTY OF TOPPER INDUSTRIES, INC. ARE INCLUDED IN THIS DRAWING. DATA AND INFORMATION CONTAINED HEREIN SHALL, OUTSIDE OF THE RECIPIENT COMPANY, NOT BE USED FOR ANY PURPOSE EXCEPT AS SPECIFICALLY AUTHORIZED BY TOPPER INDUSTRIES, INC.

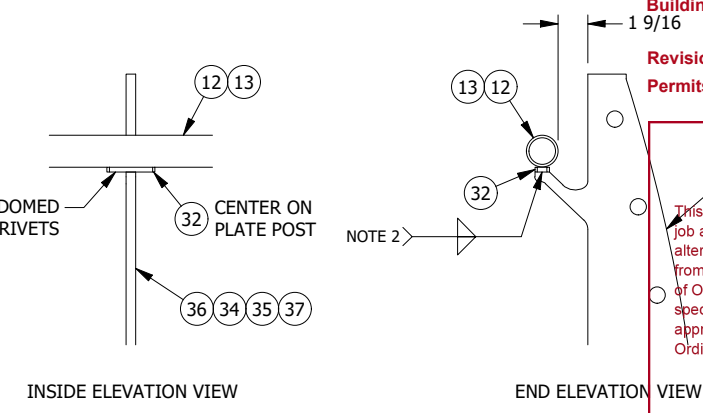
NO.	DATE	BY	CHK	REVISION DESCRIPTION
7	11/2/2022	JC		MODIFIED PER ENGINEER
6	10/31/2022	JC		MODIFIED TO BOTTOM FB
5	9/27/2022	JC		REVISED SHORE MOUNT
4	8/23/2022	JC		ADDED LIGHTRAIL

4'x30' GANGWAY
DECK, SHORE AND WATER END DETAILS
DANA POINT HARBOR REVITALIZATION
BELLINGHAM MARINE INDUSTRIES, INC.
DANA POINT, CALIFORNIA

SIZE B	DWG NO. 8115-A220	JOB NO. 8115
--------	-------------------	--------------

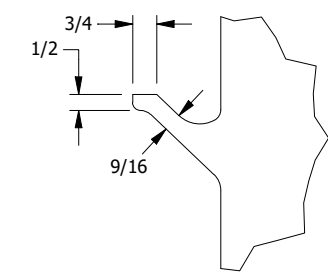


ATTACH WITH (2) 1/4" DOMED HEAD SS BLIND RIVETS

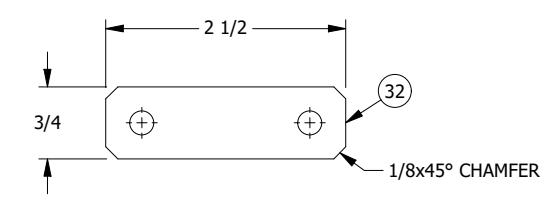


INSIDE ELEVATION VIEW
END ELEVATION VIEW

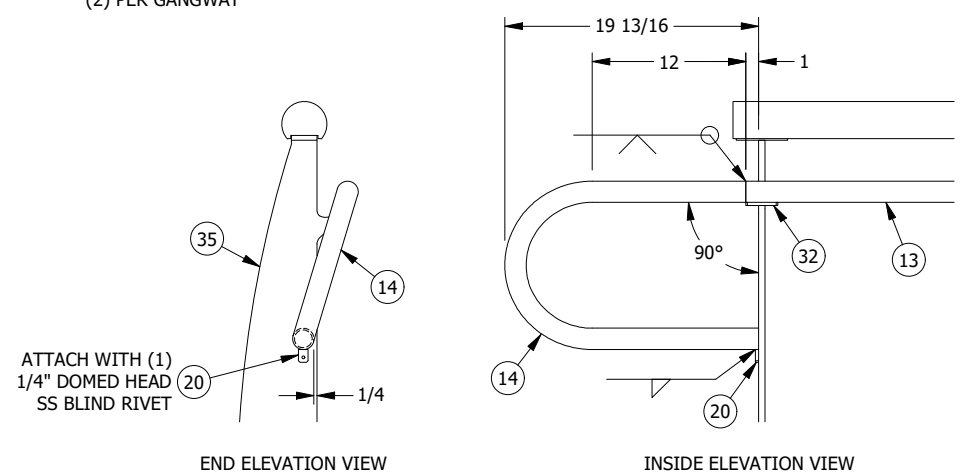
HANDRAIL ATTACHMENT
(INCLUDING WHEN HANDRAIL SPLICE OCCURS AT MID PLATE POST)



DETAIL A
HANDRAIL SUPPORT
(TYPICAL ALL PLATE POSTS)



MIDRAIL ATTACHMENT



SHORE END HANDRAIL RETURN
(OTHER SIDE IS MIRROR IMAGE)

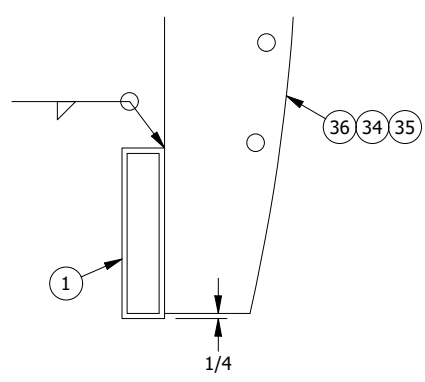
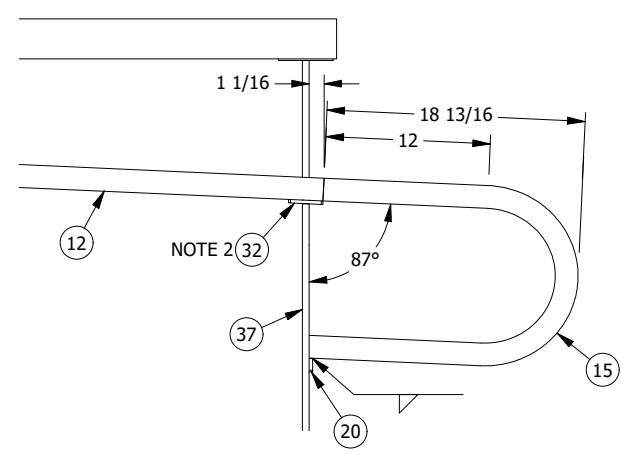
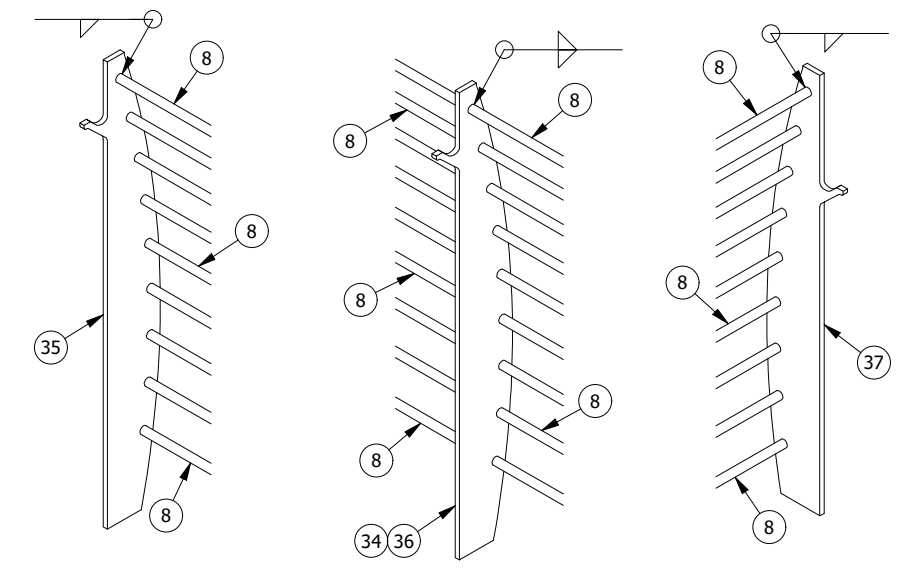
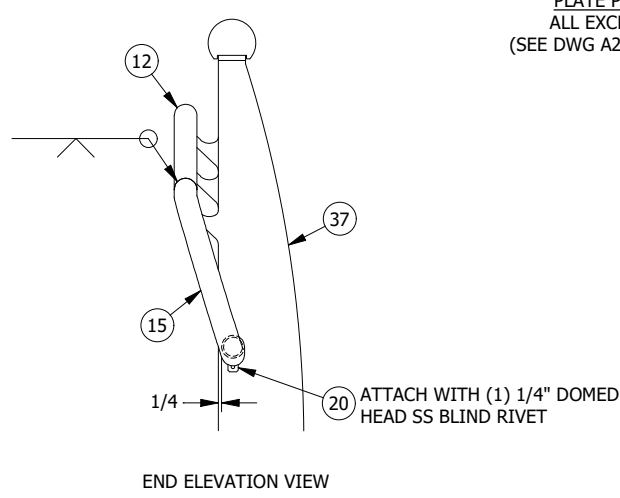


PLATE POST TO CHORD
ALL EXCEPT WATER END
(SEE DWG A240 FOR WATER END)



WATER END HANDRAIL RETURN
(OTHER SIDE IS MIRROR IMAGE)



END ELEVATION VIEW

- NOTES
- UNLESS OTHERWISE SPECIFIED:
 - DIMENSIONS ARE IN INCHES.
 - WELD SIZE IS EQUAL TO THICKNESS OF THINNER PART WELDED, MAX 5/16".
 - AT SLOPED END, ANGLE THE HANDRAIL TAB TO MATCH HANDRAIL SLOPE BEFORE WELDING TO PLATE POST.
 - REFERENCE DWG A201 FOR PARTS LIST.

NO.	DATE	BY	CHK	REVISION DESCRIPTION
7	11/2/2022	JC		MODIFIED PER ENGINEER
6	10/31/2022	JC		MODIFIED TO BOTTOM FB
5	9/27/2022	JC		REVISED SHORE MOUNT
4	8/23/2022	JC		ADDED LIGHTRAIL

TOPPER

PO BOX 2930
WOODLAND, WA 98674

(360) 841-8320 (800) 332-DOCK
FAX (360) 841-8021 3625

PROPRIETARY DESIGNS AND DATA THAT ARE THE SOLE PROPERTY OF TOPPER INDUSTRIES, INC. ARE INCLUDED IN THIS DRAWING. DATA AND INFORMATION CONTAINED HEREIN SHALL, OUTSIDE OF THE RECIPIENT COMPANY, NOT BE USED FOR ANY PURPOSE EXCEPT AS SPECIFICALLY AUTHORIZED BY TOPPER INDUSTRIES, INC.

4'x30' GANGWAY
PLATE POSTS, HANDRAIL AND MIDRAIL DETAILS
DANA POINT HARBOR REVITALIZATION
BELLINGHAM MARINE INDUSTRIES, INC.
DANA POINT, CALIFORNIA

NO.	DATE	BY	CHK	REVISION DESCRIPTION
NO.	DATE	BY	CHK	REVISION DESCRIPTION

SIZE B DWG NO. 8115-A230 JOB NO. 8115



11/2/2022

Revision: 1
Permits: BNR21-0604-R1

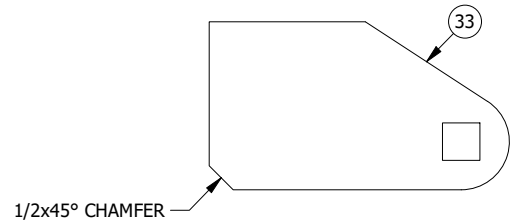
County of Orange - OC Public Works
OC Development Services
APPROVED

This set of plans and specifications must be kept on the job at all times. It is unlawful to make any changes or alterations to these plans without written permission from OC Public Works, OC Development Services of Orange County. The stamping of these plan specifications SHALL NOT be held to permit or be an approval of the violation of any provisions of any County Ordinance or State law.

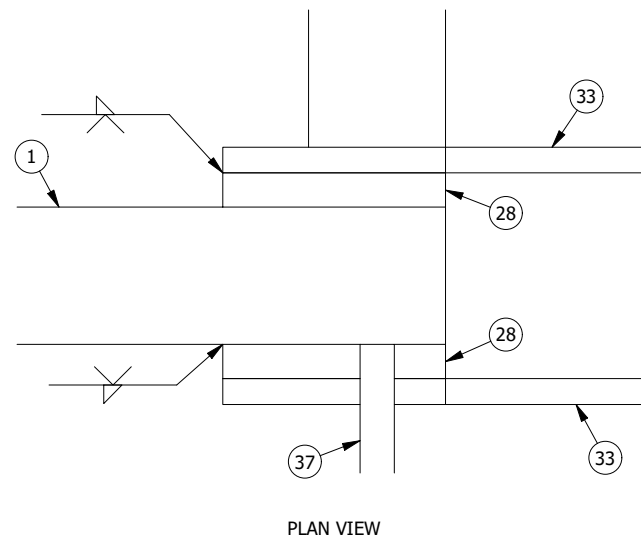
Hadi Tabatabaee
BUILDING OFFICIAL

NOTES

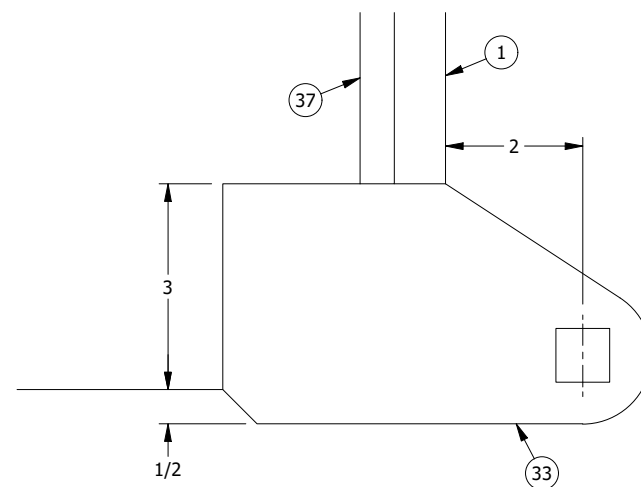
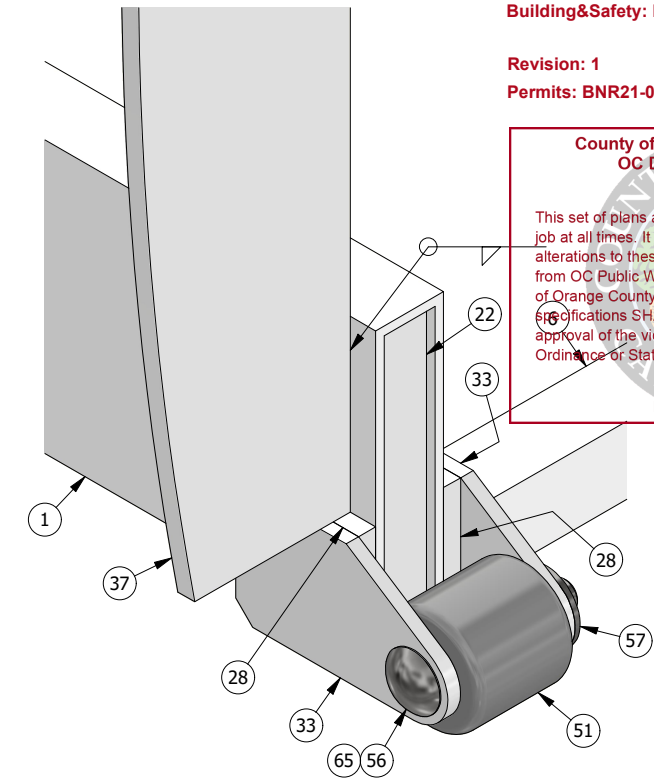
- UNLESS OTHERWISE SPECIFIED:
- DIMENSIONS ARE IN INCHES.
- WELD SIZE IS EQUAL TO THICKNESS OF THINNER PART WELDED, MAX 5/16".
- GALVANIZE STEEL TO ASTM A123.
- USE OVERSIZED TAP FOR STEEL TO BE GALVANIZED.
- REFERENCE DWG A201 FOR PARTS LIST.



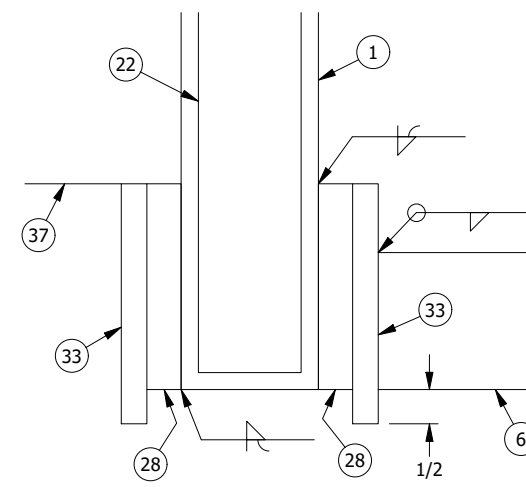
ADD CHAMFER TO STOCK PART



PLAN VIEW

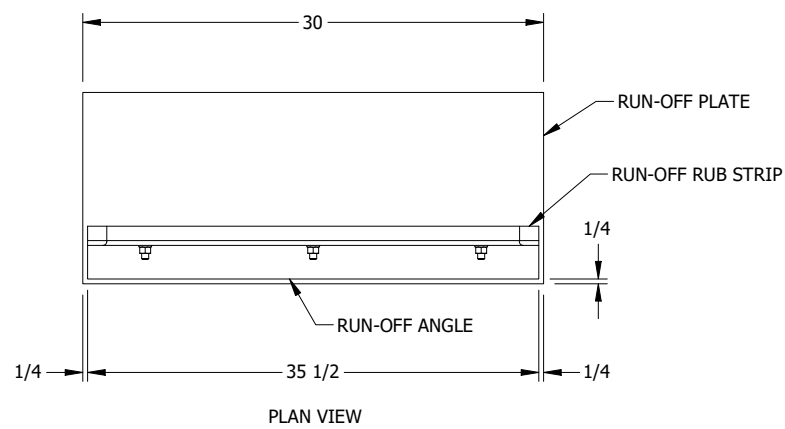
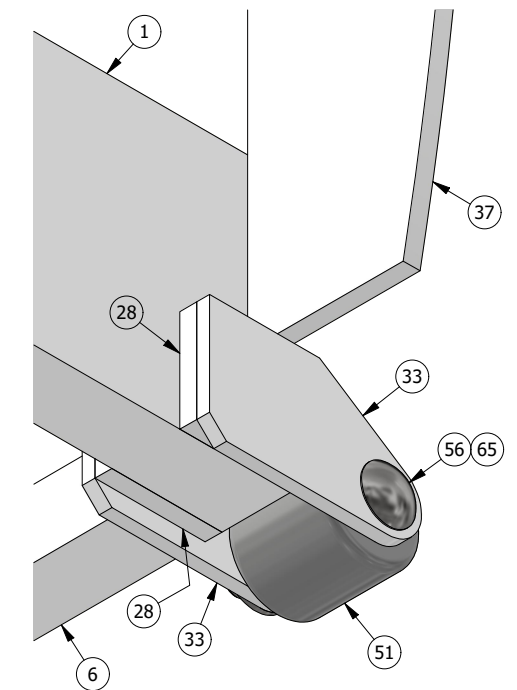


OUTSIDE ELEVATION VIEW

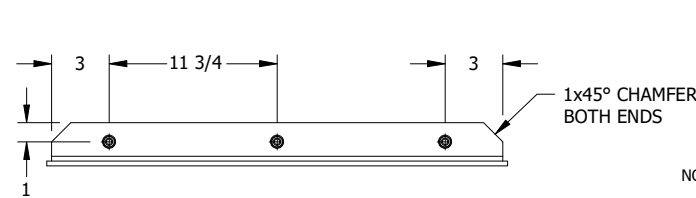


END ELEVATION VIEW

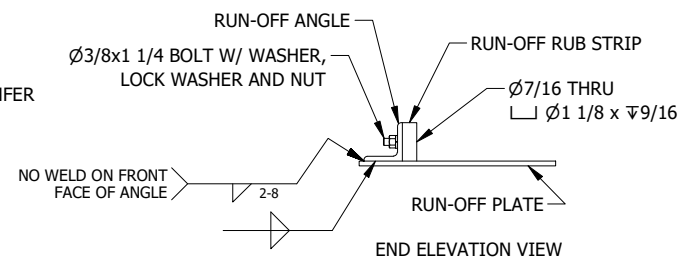
WHEEL PLATE ASSEMBLY



PLAN VIEW



SIDE ELEVATION VIEW

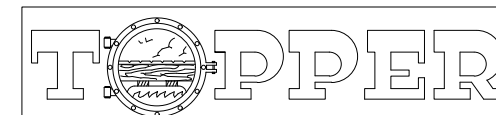


END ELEVATION VIEW

RUN-OFF PLATE ASSEMBLY
ATTACHED WITH EPOXY OR FASTENED
WITH BOLTS, EPOXY/BOLTS/HOLES
NOT BY TOPPER



11/2/2022



PO BOX 2930 WOODLAND, WA 98674 (360) 841-8320 (800) 332-DOCK (360) 841-8021 FAX (360) 841-8021 3625

PROPRIETARY DESIGNS AND DATA THAT ARE THE SOLE PROPERTY OF TOPPER INDUSTRIES, INC. ARE INCLUDED IN THIS DRAWING. DATA AND INFORMATION CONTAINED HEREIN SHALL, OUTSIDE OF THE RECIPIENT COMPANY, NOT BE USED FOR ANY PURPOSE EXCEPT AS SPECIFICALLY AUTHORIZED BY TOPPER INDUSTRIES, INC.

NO.	DATE	BY	CHK	REVISION DESCRIPTION
7	11/2/2022	JC		MODIFIED PER ENGINEER
6	10/31/2022	JC		MODIFIED TO BOTTOM FB
5	9/27/2022	JC		REVISED SHORE MOUNT
4	8/23/2022	JC		ADDED LIGHTRAIL

4'x30' GANGWAY
WHEEL AND RUN-OFF PLATE DETAILS
DANA POINT HARBOR REVITALIZATION
BELLINGHAM MARINE INDUSTRIES, INC.
DANA POINT, CALIFORNIA

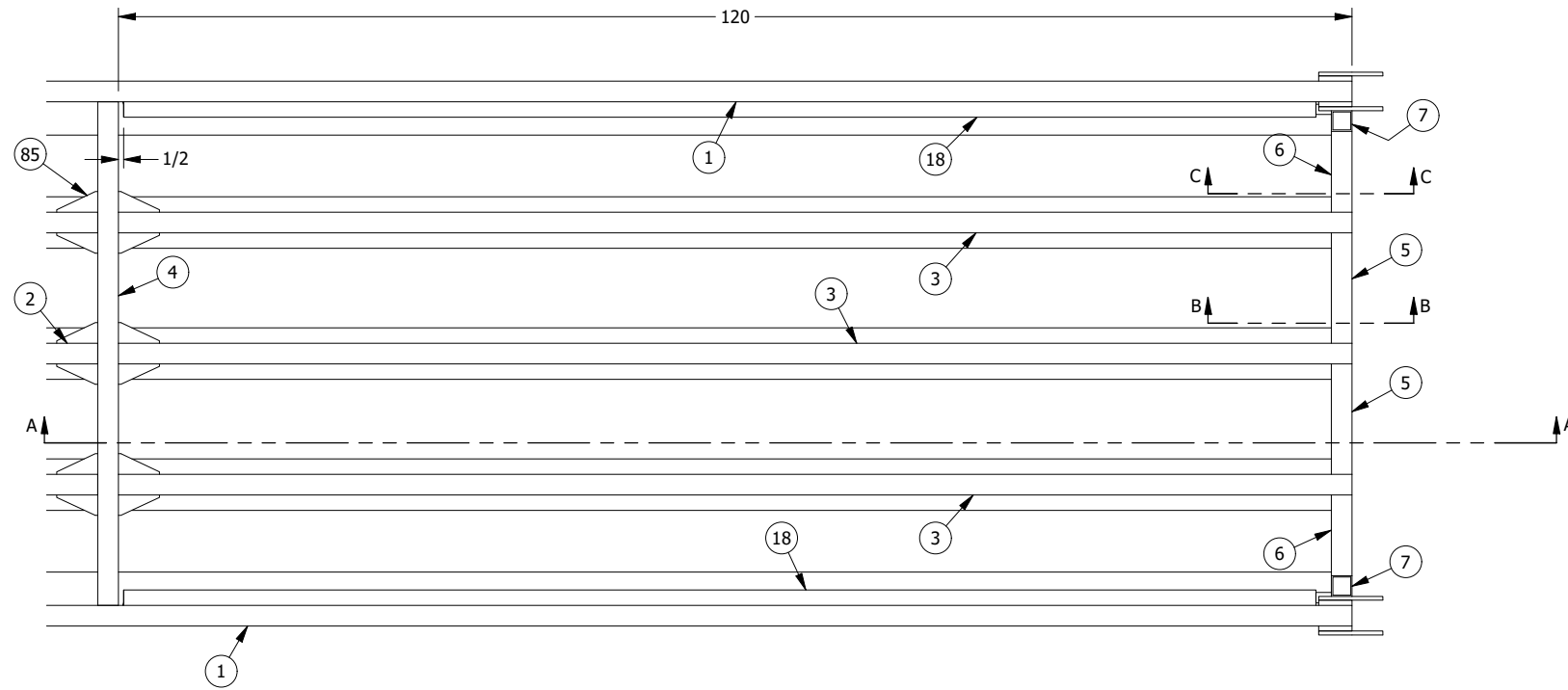
SIZE	DWG NO.	JOB NO.
B	8115-A240	8115

Revision: 1
Permits: BNR21-0604-R1

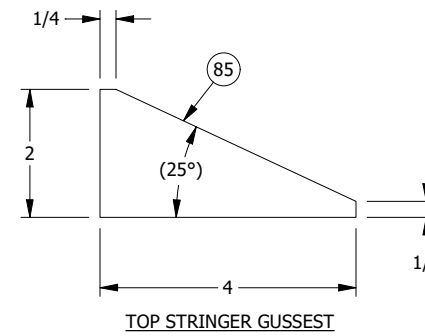
**County of Orange - OC Public Works
OC Development Services
APPROVED**

This set of plans and specifications must be kept on the job at all times. It is unlawful to make any changes or alterations to these plans without written permission from OC Public Works, OC Development Services of Orange County. The stamping of these plan specifications SHALL NOT be held to permit or be an approval of the violation of any provisions of any County Ordinance or State Law.

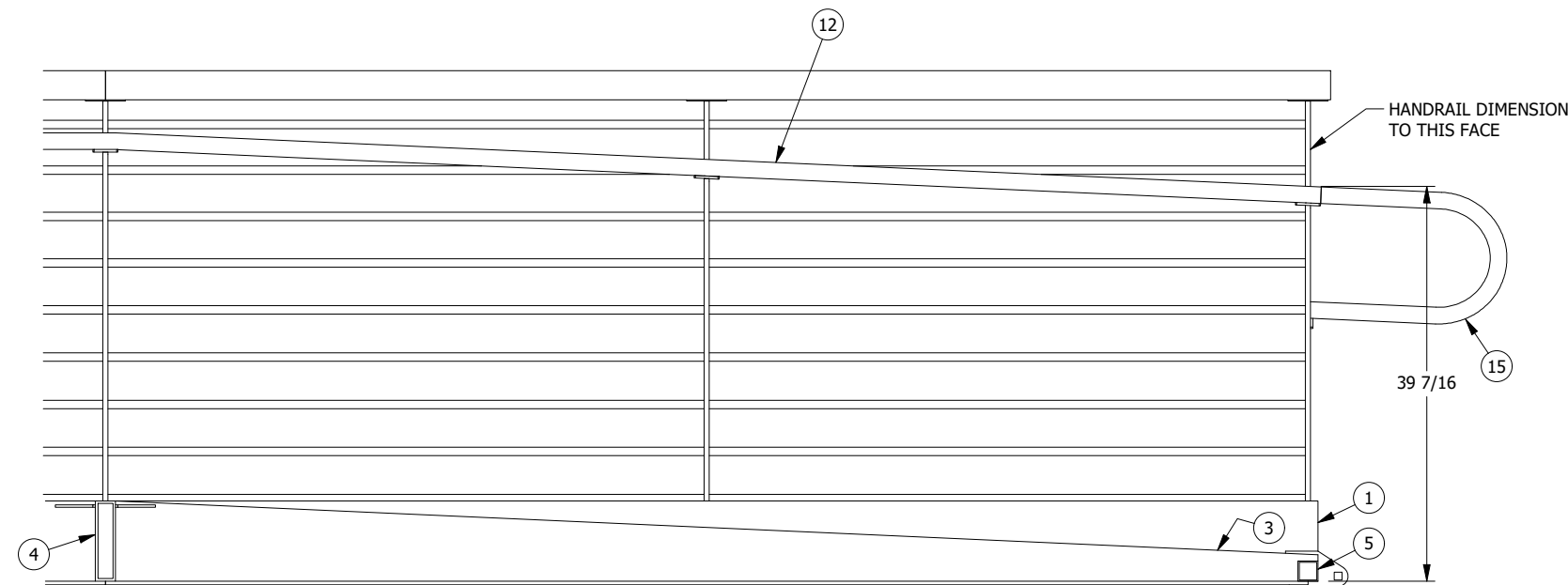
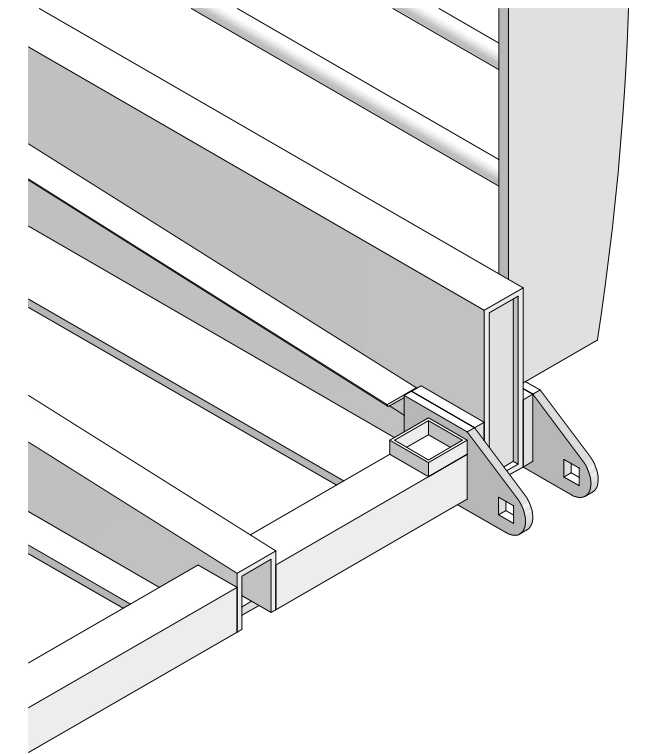
Hadi Tabatabaee
BUILDING OFFICIAL



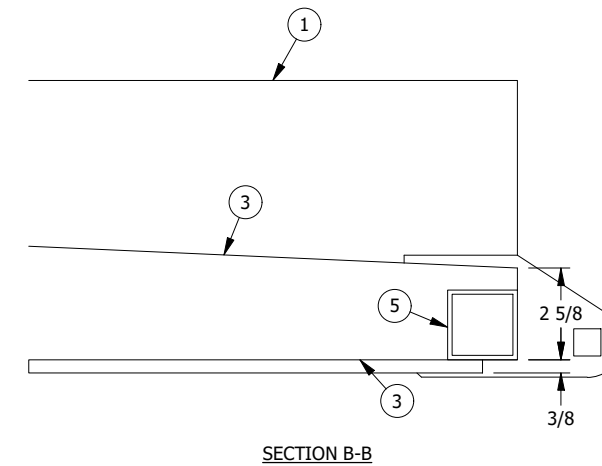
PLAN VIEW
(DECK, HANDRAIL, POSTS, MIDRAIL AND TOP RAIL NOT SHOWN)



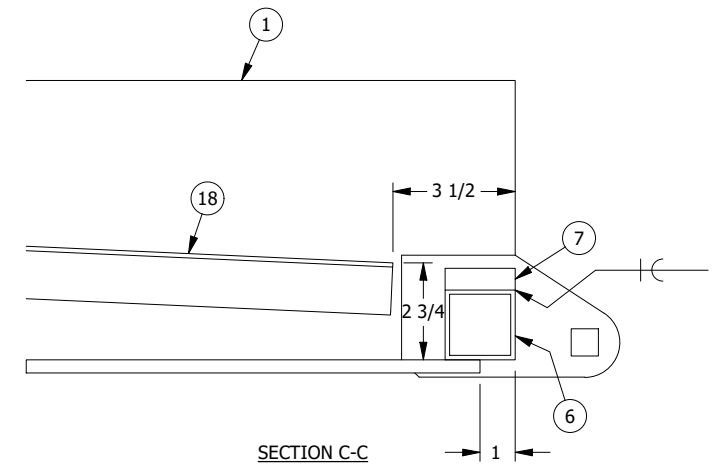
TOP STRINGER GUSSEST



SECTION A-A
(DECK NOT SHOWN)



SECTION B-B

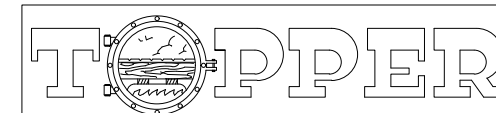


SECTION C-C

- NOTES**
1. UNLESS OTHERWISE SPECIFIED:
 - WELD SIZE IS EQUAL TO THICKNESS OF THINNER PART WELDED, MAX 5/16".
 - DIMENSIONS ARE IN INCHES.
 2. ADDITIONAL SLOPED END DETAILS ON DWG A220.
 3. REFERENCE DWG A201 FOR PARTS LIST.



11/2/2022



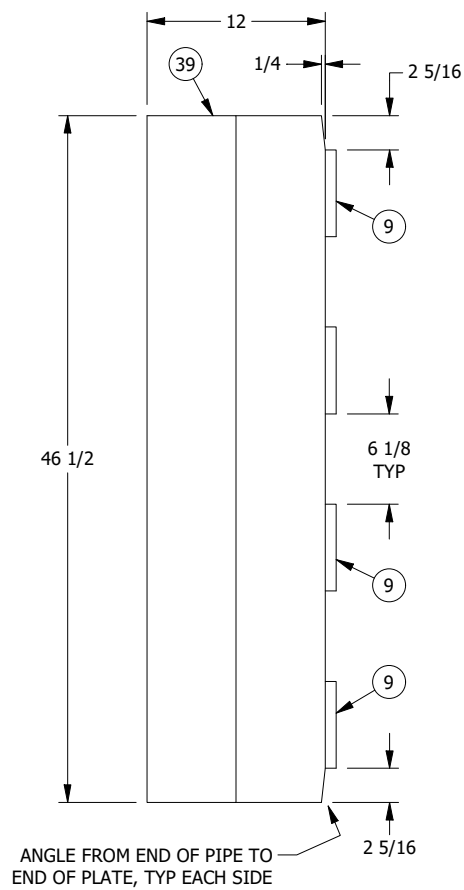
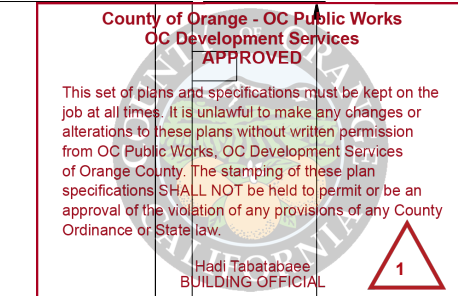
PO BOX 2930 WOODLAND, WA 98674 (360) 841-8320 (800) 332-DOCK FAX (360) 841-8021 3625

PROPRIETARY DESIGNS AND DATA THAT ARE THE SOLE PROPERTY OF TOPPER INDUSTRIES, INC. ARE INCLUDED IN THIS DRAWING. DATA AND INFORMATION CONTAINED HEREIN SHALL, OUTSIDE OF THE RECIPIENT COMPANY, NOT BE USED FOR ANY PURPOSE EXCEPT AS SPECIFICALLY AUTHORIZED BY TOPPER INDUSTRIES, INC.

NO.	DATE	BY	CHK	REVISION DESCRIPTION
7	11/2/2022	JC		MODIFIED PER ENGINEER
6	10/31/2022	JC		MODIFIED TO BOTTOM FB
5	9/27/2022	JC		REVISED SHORE MOUNT
4	8/23/2022	JC		ADDED LIGHTRAIL

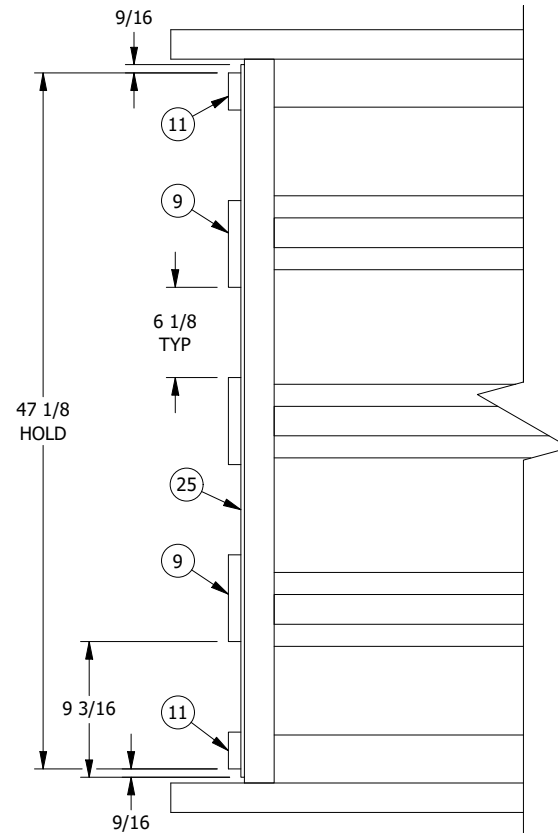
4'x30' GANGWAY
SLOPED END DETAILS
DANA POINT HARBOR REVITALIZATION
BELLINGHAM MARINE INDUSTRIES, INC.
DANA POINT, CALIFORNIA

SIZE	DWG NO.	JOB NO.
B	8115-A250	8115



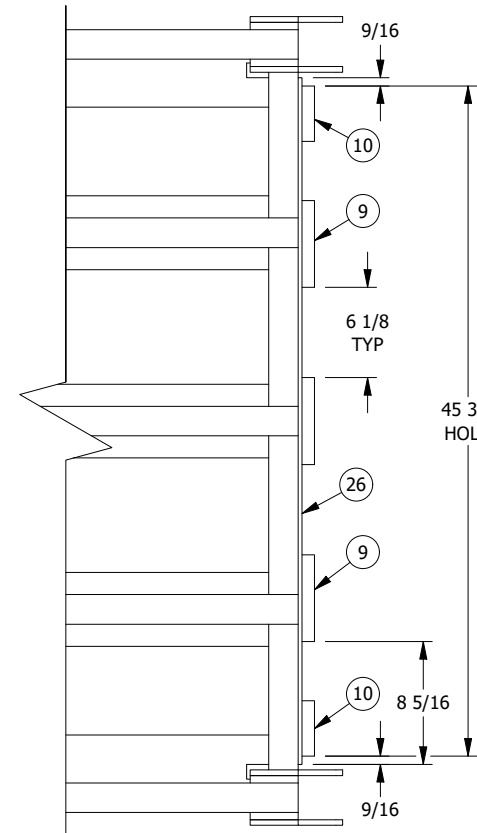
PLAN VIEW

TRANSITION PLATE
SHORE END



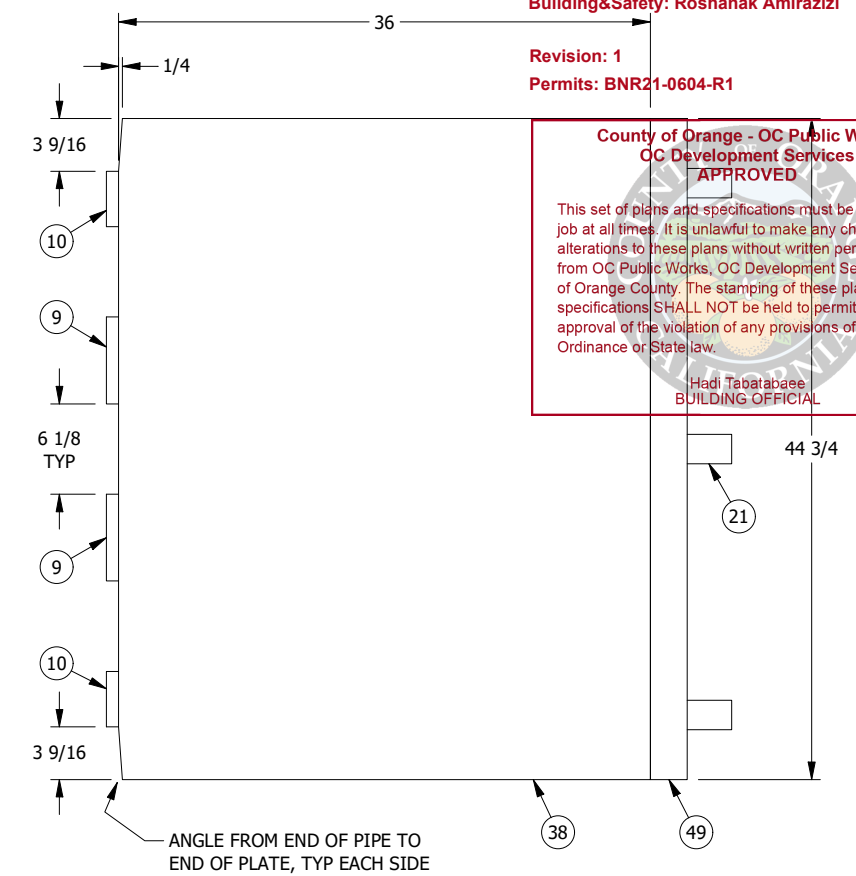
PLAN VIEW

TRANS MOUNTS

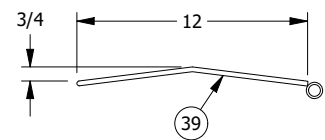


PLAN VIEW

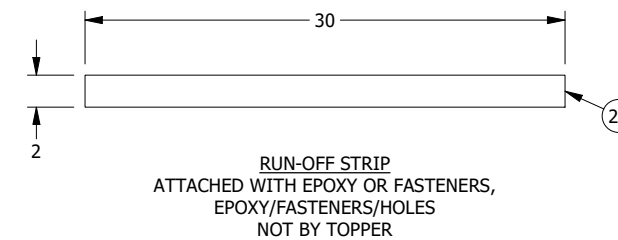
TRANSITION PLATE
WATER END



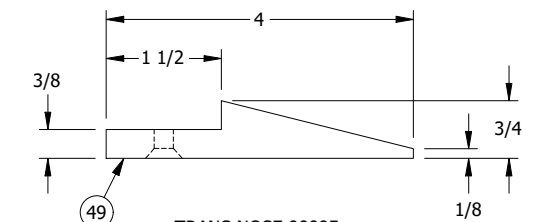
ANGLE FROM END OF PIPE TO
END OF PLATE, TYP EACH SIDE



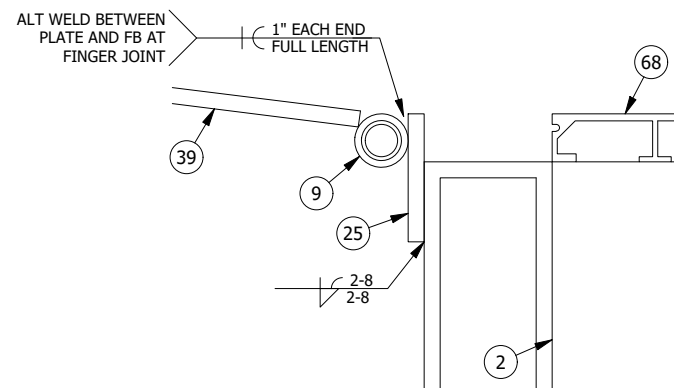
TRANSITION PLATE BREAK
SHORE END



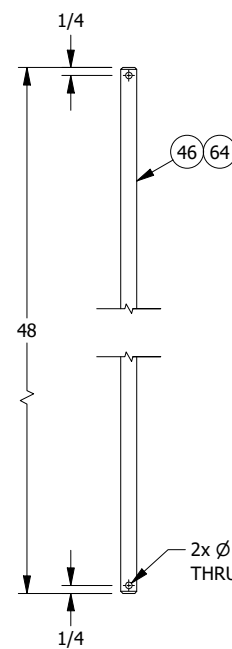
RUN-OFF STRIP
ATTACHED WITH EPOXY OR FASTENERS,
EPOXY/FASTENERS/HOLES
NOT BY TOPPER



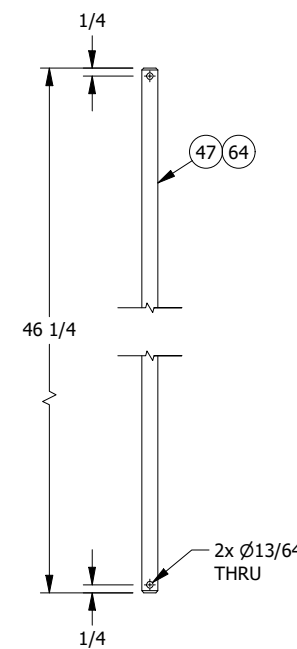
TRANS NOSE 00095
FASTEN WITH 1/4-20 FH SS
SCREWS AT 6" OC, GRIND
FLUSH WITH TOP OF PLATE



WELD DETAILS
(SHORE END)



TRANS AXLE
SHORE END



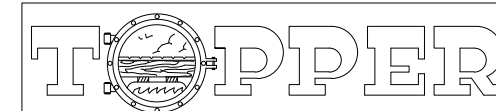
TRANS AXLE
WATER END

NOTES

- UNLESS OTHERWISE SPECIFIED:
- DIMENSIONS ARE IN INCHES.
- WELD SIZE IS EQUAL TO THICKNESS OF THINNER PART WELDED, MAX 5/16".
- METALIZE TOP SURFACE OF TRANSITION PLATES: GRADE 2, MEDIUM.
- IF TRANSITION PLATE HAS BREAK, RADIUS IS 1/2".
- UNLESS UHMW NOSE IS USED, BULLNOSE LEADING EDGE OF TRANSITION PLATE.
- REFERENCE DWG A201 FOR PARTS LIST.



11/2/2022



PO BOX 2930 WOODLAND, WA 98674 (360) 841-8320 (800) 332-DOCK (360) 841-8021 3625

PROPRIETARY DESIGNS AND DATA THAT ARE THE SOLE PROPERTY OF TOPPER INDUSTRIES, INC. ARE INCLUDED IN THIS DRAWING. DATA AND INFORMATION CONTAINED HEREIN SHALL, OUTSIDE OF THE RECIPIENT COMPANY, NOT BE USED FOR ANY PURPOSE EXCEPT AS SPECIFICALLY AUTHORIZED BY TOPPER INDUSTRIES, INC.

NO.	DATE	BY	CHK	REVISION DESCRIPTION
7	11/2/2022	JC		MODIFIED PER ENGINEER
6	10/31/2022	JC		MODIFIED TO BOTTOM FB
5	9/27/2022	JC		REVISED SHORE MOUNT
4	8/23/2022	JC		ADDED LIGHTRAIL

4'x30' GANGWAY
TRANSITION PLATES
DANA POINT HARBOR REVITALIZATION
BELLINGHAM MARINE INDUSTRIES, INC.
DANA POINT, CALIFORNIA

SIZE	DWG NO.	JOB NO.
B	8115-A300	8115

PARTS LIST					
ITEM	DESCRIPTION	QTY	MATERIAL	SIZE	LENGTH
80	FLAT BAR	4	ALUMINUM	3/8x4FB	4 1/2 in
81	FLAT BAR	2	ALUMINUM	1/2x6FB	12 in

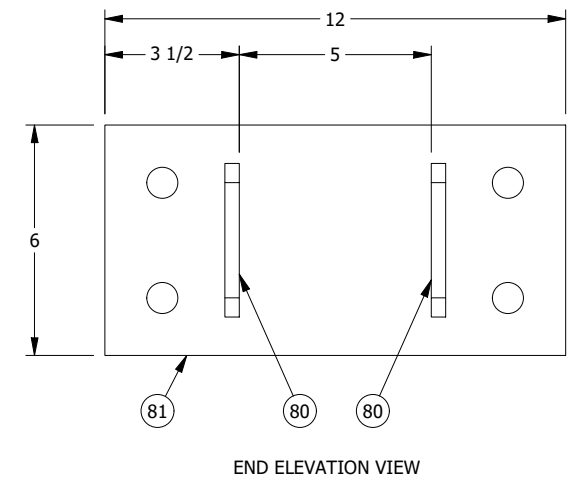
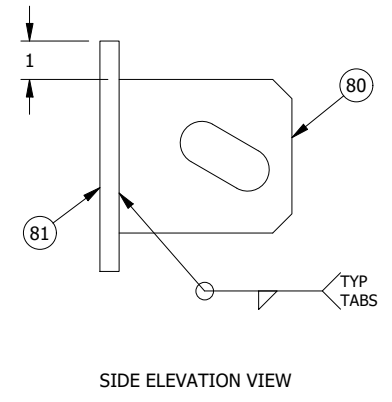
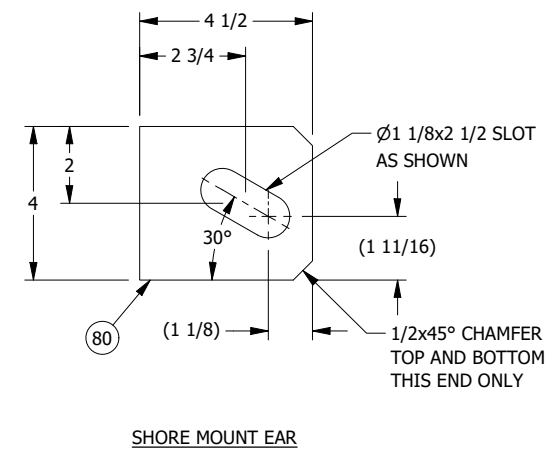
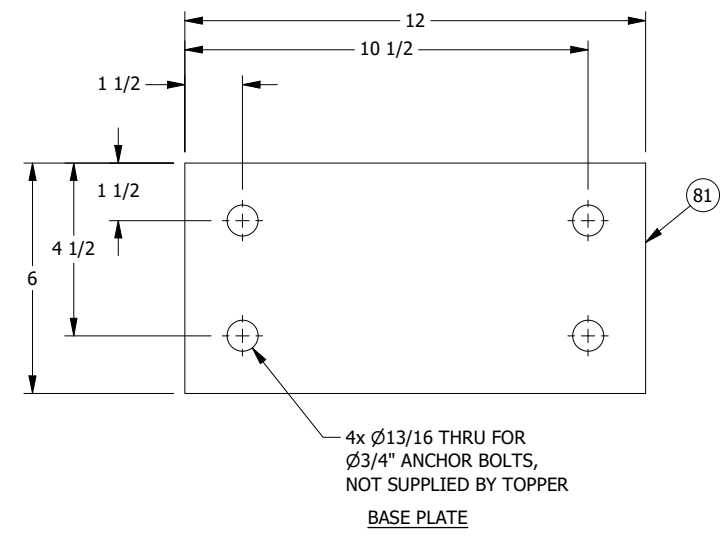
Building&Safety: Roshanak Amirazizi 12/20/2022

Revision: 1
Permits: BNR21-0604-R1

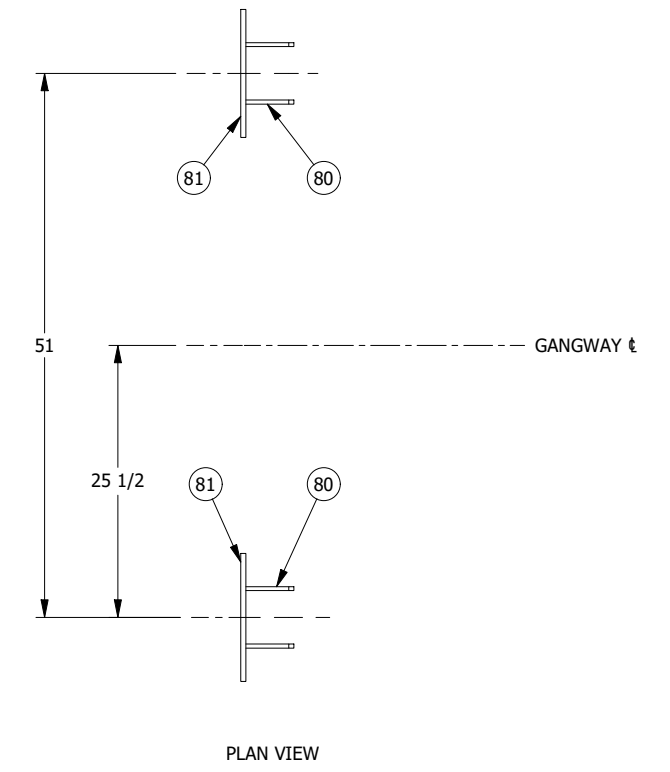
**County of Orange - OC Public Works
OC Development Services
APPROVED**

This set of plans and specifications must be kept on the job at all times. It is unlawful to make any changes or alterations to these plans without written permission from OC Public Works, OC Development Services of Orange County. The stamping of these plan specifications SHALL NOT be held to permit or be an approval of the violation of any provisions of any County Ordinance or State law.

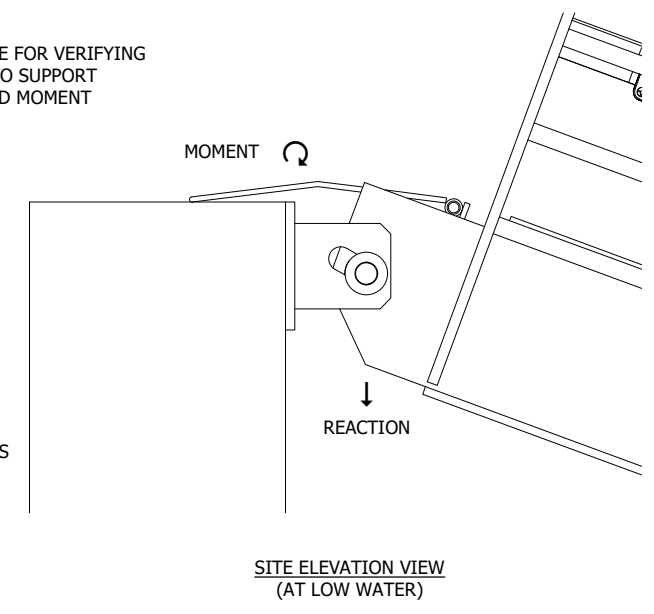
Hadi Tebatbaee
BUILDING OFFICIAL



SHORE MOUNT



CUSTOMER IS RESPONSIBLE FOR VERIFYING
ABUTMENT IS ADEQUATE TO SUPPORT
THE STATED REACTION AND MOMENT



DEAD LOAD + LIVE LOAD
REACTION = 2.15 KIPS
MOMENT = 6.46 KIP INCHES
EACH SIDE (UNFACTORED)

- NOTES**
- UNLESS OTHERWISE SPECIFIED:
 - DIMENSIONS ARE IN INCHES.
 - WELD SIZE IS EQUAL TO THICKNESS OF THINNER PART WELDED, MAX 5/16".
 - GALVANIZE STEEL TO ASTM A123.
 - REFERENCE DWG A201 FOR PARTS LIST.



11/2/2022

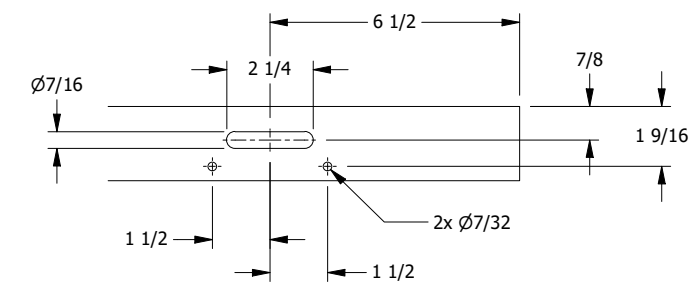
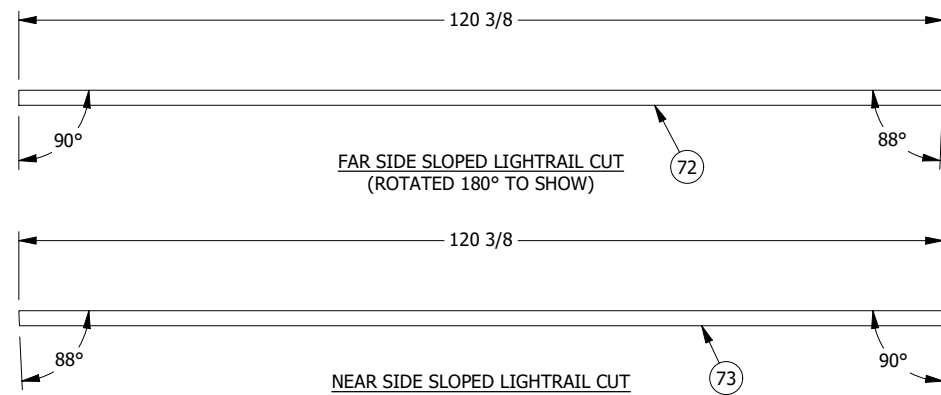
NO.	DATE	BY	CHK	REVISION DESCRIPTION
7	11/2/2022	JC		MODIFIED PER ENGINEER
6	10/31/2022	JC		MODIFIED TO BOTTOM FB
5	9/27/2022	JC		REVISED SHORE MOUNT
4	8/23/2022	JC		ADDED LIGHTRAIL

TOPPER

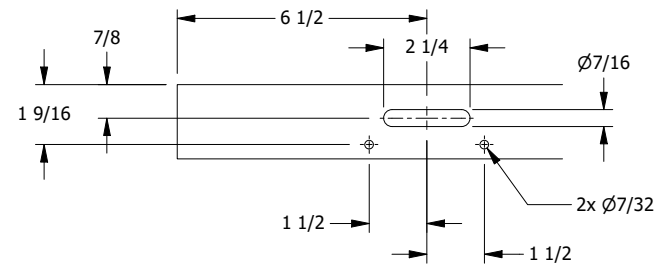
PO BOX 2930 WOODLAND, WA 98674 (360) 841-8320 (800) 332-DOCK FAX (360) 841-8021 3625

PROPRIETARY DESIGNS AND DATA THAT ARE THE SOLE PROPERTY OF TOPPER INDUSTRIES, INC. ARE INCLUDED IN THIS DRAWING. DATA AND INFORMATION CONTAINED HEREIN SHALL, OUTSIDE OF THE RECIPIENT COMPANY, NOT BE USED FOR ANY PURPOSE EXCEPT AS SPECIFICALLY AUTHORIZED BY TOPPER INDUSTRIES, INC.

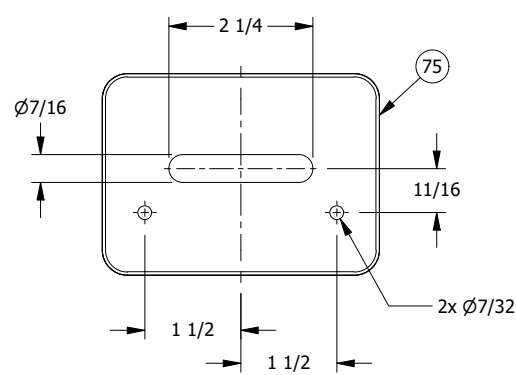
4'x30' GANGWAY SHORE MOUNTS DANA POINT HARBOR REVITALIZATION BELLINGHAM MARINE INDUSTRIES, INC. DANA POINT, CALIFORNIA			
SIZE	DWG NO.	JOB NO.	
B	8115-A400	8115	



LIGHTRAIL CUT FAR SIDE
(SLOT & HOLES THRU BACK FLANGE ONLY,
SHORE END OF LIGHTRAIL)

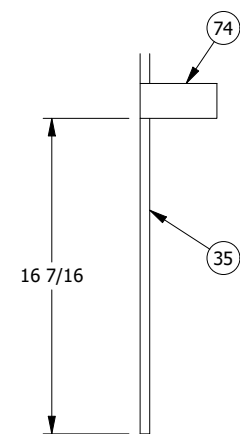


LIGHTRAIL CUT NEAR SIDE
(SLOT & HOLES THRU BACK FLANGE ONLY,
SHORE END OF LIGHTRAIL)

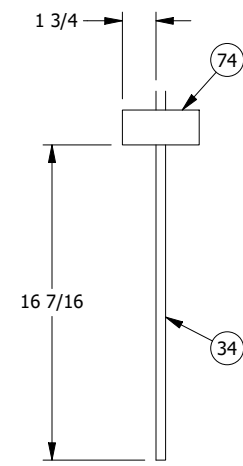


BACK ELEVATION VIEW
(SLOT & HOLES THRU BACK ONLY)

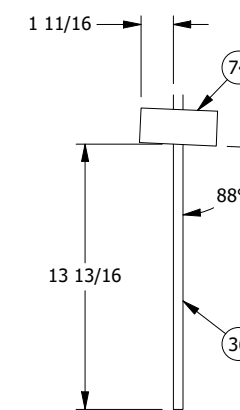
FLEXIBLE LED STRIP LIGHT SPECS:
 - LED TYPE: 5050 SMD LED
 - LED QUANTITY (UNITS/M): 60
 - RATED LIFETIME (HRS): 50,000
 - BRIGHTNESS (LM): 720LM/M
 - INPUT VOLTAGE (V): 110-120 AC
 - CERTIFICATION: CE, RoHS
 - PROTECTION RATING: IP65
 - WATERPROOF: IP65 FOR OUTDOOR USE
 - LIGHT COLOR: WARM WHITE
 - DAYLIGHT COLOR TEMPERATURE (K):
 WARM - 2800-3200
 - WATTAGE (W/M): 14.4



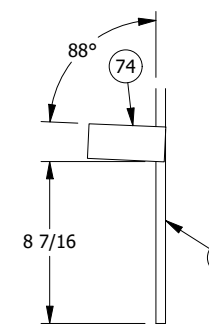
SHORE END POST



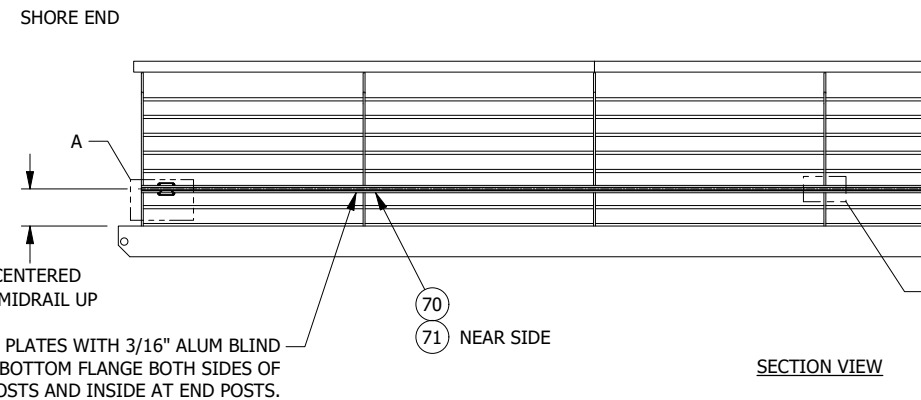
TYPICAL INTERNAL POST



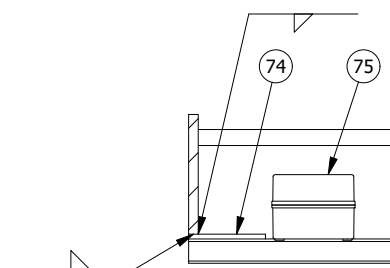
INTERNAL POST AT SLOPED LIGHTRAIL



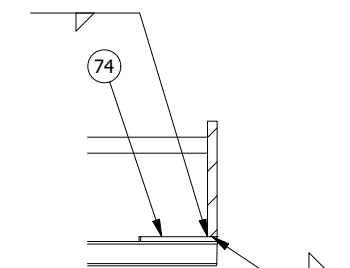
WATER END POST



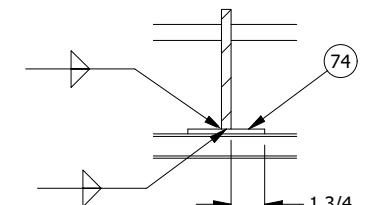
SECTION VIEW



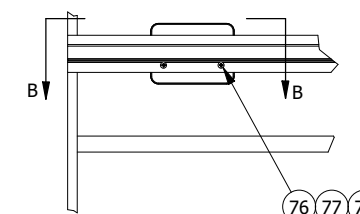
SECTION B-B
BOTH SIDES SYMETRICAL



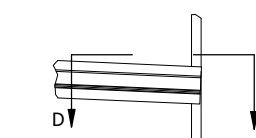
SECTION D-D
BOTH SIDES SYMETRICAL



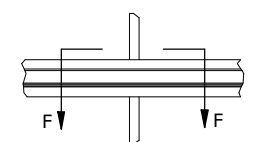
SECTION F-F
ALL INTERNAL POSTS TYP



DETAIL A



DETAIL C

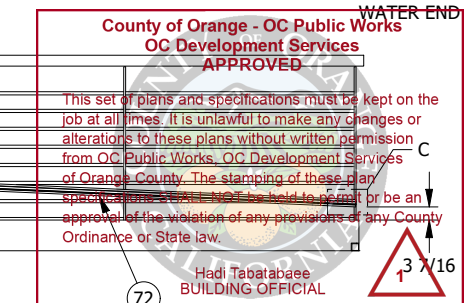


DETAIL E

- NOTES**
 1. UNLESS OTHERWISE SPECIFIED:
 - DIMENSIONS ARE IN INCHES.
 - WELD SIZE IS EQUAL TO THICKNESS OF THINNER PART WELDED, MAX 5/16".
 2. REFERENCE DWG LTRAIL-01 FOR ADDITIONAL DETAILS.
 3. REFERENCE DWG A201 FOR PARTS LIST.

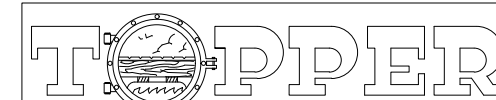


11/2/2022



72 NEAR SIDE
73 NEAR SIDE

NO.	DATE	BY	CHK	REVISION DESCRIPTION
7	11/2/2022	JC		MODIFIED PER ENGINEER
6	10/31/2022	JC		MODIFIED TO BOTTOM FB
5	9/27/2022	JC		REVISED SHORE MOUNT
4	8/23/2022	JC		ADDED LIGHTRAIL



PO BOX 2930 WOODLAND, WA 98674 (360) 841-8320 (800) 332-DOCK FAX (360) 841-8021 3625

PROPRIETARY DESIGNS AND DATA THAT ARE THE SOLE PROPERTY OF TOPPER INDUSTRIES, INC. ARE INCLUDED IN THIS DRAWING. DATA AND INFORMATION CONTAINED HEREIN SHALL, OUTSIDE OF THE RECIPIENT COMPANY, NOT BE USED FOR ANY PURPOSE EXCEPT AS SPECIFICALLY AUTHORIZED BY TOPPER INDUSTRIES, INC.

4'x30' GANGWAY
LIGHTRAIL DETAILS
DANA POINT HARBOR REVITALIZATION
BELLINGHAM MARINE INDUSTRIES, INC.
DANA POINT, CALIFORNIA

SIZE	DWG NO.	JOB NO.
B	8115-A700	8115